



LIBBEY®



Product Directory



LIBBEY | SELECT PARTNERS

your toolkit to a better buffet

aps



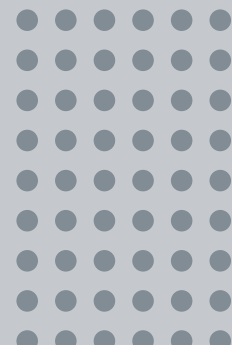
With a range of colors, textures and styles, APS Germany buffet and serveware opens up a world of stunning possibilities well beyond traditional displays. APS is beautiful at first glance, but a closer look reveals it's also brilliantly designed around the way you work.

We've selected a range of hardworking pieces that are engineered to make your and your team's jobs easier – delivering more versatile, inventive functionality than you'll find in any other selection.



Libbey Select Partners is a curated selection of premium European brands crafted to exceed the expectations of discerning diners and foodservice professionals.

Handpicked for their inventive design, exceptional elegance and uncompromising performance, Select Partners brands share Libbey's commitment to supporting your unique creative vision with unmatched service and quality.

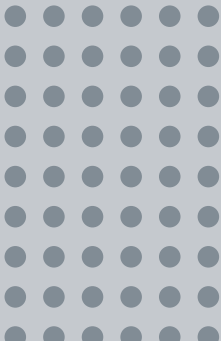




Shown: Superbox system and Akazia bread station

SECTION CONTENTS

Steps to set up a buffet	4	<i>Finish</i>	56
Serve	6	Utensils	58
Serveware	8	Dressing Pots	60
Dispensers	30	Organizers	62
Trays	35	Cruets + Mills	64
<i>Build</i>	36	Miscellaneous	68
Superbox System	38	Cover	72
Cooling + Heating Systems	41	Integrated	74
Stands	46	Assorted	77
Shelves	53	APS At-a-glance	80





It all starts with your menu. From statement-making eye-catchers to trays and sleek dispenser options, serve up your cuisine and drinks in style.

2 BUILD

Elevate presentation value and maximize your table real estate with stands and systems that take presentations vertical while tying everything together.

3 FINISH

Page 56

4 COVER

Page 72

SUPERBLY ENGINEERED TO SIMPLIFY

Smart features help you elevate presentations, help your staff be more efficient and maximize your investment with multi-functional pieces ingeniously designed to work together in a multitude of ways.

EVERY DETAIL PERFECTED

Meticulously designed for ease of use, care and cleaning.

NO-HASSLE REPLACEMENT

Backed with confidence.

STACKABLE / NESTABLE

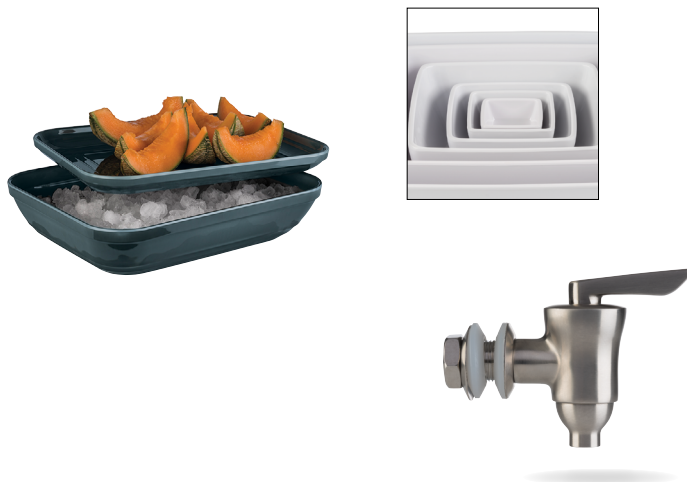
Easier serving and compact storage maximizes space and staff's time.

RANGE OF COLORS / TEXTURES

Explore a breadth of design possibilities.

VERSATILE LIDS / COVERS

Interchangeable sizes work with multiple products.



DESIGNED TO INTEGRATE

Combine and build in multiple ways for truly custom displays. APS® Germany features four compatibility systems that span the offering, in addition to beautiful stand-alone products.



PLUS

Trend-forward, high-style buffet system with interconnecting rings for building with round and square pieces.



SUPERBOX

Versatile, multipurpose boxes build vertically or horizontally with locking corner notches, creating an integrated, unified appearance; containers flip, stack and connect.



GN PLATFORM

Modular products in industry-standard sizes provide extensive versatility with other APS products, as well as with your existing collections.



PURE

To create unlimited combinations, product focuses on streamlining staff operation.



INDEPENDENT

Freestanding units that are not part of any system. They work beautifully on their own or as a complement to a more sophisticated display.



SERVE

PUT YOUR CUISINE CENTER STAGE

Creating your APS® Germany system all starts with your menu and events. Showcasing and serving your cuisine and drinks poses the dual challenge of presenting it in a dramatic, attractive way that complements the experience, while also making it easy for guests to serve themselves and simple for staff to maintain.

A taste of the collection

SERVEWARE



Everything from bowls and trays to minis and other versatile choices for serving any food option.

DISPENSERS



Includes dispensers for beverages and foods (such as cereal), along with table service pitchers and bottle coolers.

TRAYS



A range of classic, traditional styles, includes sizes for buffet presentations or individual servings to the table.

SERVEWARE

These pieces allow you to showcase your menu in stunning form, from bowls and trays to minis and other versatile choices for serving any food option. This attractive array of aesthetic options provides what you need to complement the unique atmosphere of your establishment and the experiences you're creating.

AKAZIA

This acacia wood slotted cutting board is perfect for fresh bread service with anti-slip feet to safely keep it in place while cutting. Crumbs drop through slots to be collected on a bottom shelf.



Bread Station
No. APS 00884
 L20 $\frac{7}{8}$ " W12 $\frac{7}{8}$ " H1"
 GN 1/1
 Caramel Acacia
 6 pcs.



Bread Station
No. APS 00911
 L12 $\frac{3}{4}$ " W14" H1 $\frac{3}{8}$ "
 GN 2/3
 Caramel Acacia
 1 set, 2pcs./set



Practical design collects crumbs.

ACACIA

NEW

Natural oiled acacia wood bowls and trays add warmth to displays in modern, organic shapes.

Works great with other Acacia products shown on page 48.



Serving Bowl
No. APS 00790
L6½" W3½" H¾"
1 pc.

Serving Bowl
No. APS 00791
L9¼" W5½" H¾"
1 pc.



Bowls
No. APS 00794
D8¼" H3¾"
60 oz.
1 doz.



Serving Board
No. APS 00792
L14½" W3½" H¾"
1 pc.



Serving Board
No. APS 00793
L9¾" W6¾" H½"
1 pc.



Bowls
No. APS 00795
D9¾" H3¾"
84 oz.
1 doz.

Compatible with:
APS 15342 Cover with spoon notch



Bowls
No. APS 00796
D10½" H3¾"
101 oz.
1 doz.



Compatible
with lids
page 76.



Shown: Acacia bowls and Svart basket

OLIVE

NEW

Made from durable and beautiful natural olive wood that appears to come right from the tree, each piece in this serveware and utensil collection has its own unique features.



Wood Bowl
No. APS 00843
L4½" W3" H1"
1½ oz.
Olive Wood
1 pc.



Wood Bowl
No. APS 00844
L6½" W3¾" H1"
3 oz.
Olive Wood
1 pc.



Wood Bowl
No. APS 00907
L5" W3" H2½"
6¾ oz.
Olive Wood
1 pc.



Wood Bowl
No. APS 00908
L6" W3½" H2¾"
10 oz.
Olive Wood
1 pc.



Wood Bowl
No. APS 01023
L9¾" W3¾" H3"
13½ oz.
Olive Wood
1 pc.



Wood Bowl
No. APS 01010
D4" H1½"
5 oz.
Olive Wood
1 pc.



Wood Bowl
No. APS 01011
D5" H1¾"
8¾ oz.
Olive Wood
1 pc.



Wood Bowl
No. APS 01012
D6" H1¾"
16 oz.
Olive Wood
1 pc.





Wood Serving Board
No. APS 00870
L9 $\frac{7}{8}$ " W6 $\frac{5}{8}$ " H $\frac{1}{2}$ "
Olive Wood
1 pc.



Wood Serving Board
No. APS 00871
L11 $\frac{1}{8}$ " W8" H $\frac{3}{4}$ "
Olive Wood
1 pc.



Wood Serving Board
No. APS 00873
L22" W5 $\frac{5}{8}$ " H $\frac{1}{2}$ "
Olive Wood
1 pc.



Wood Serving Board
No. APS 00874
L22" W7 $\frac{7}{8}$ " H $\frac{3}{4}$ "
Olive Wood
1 pc.



Wood Serving Board
No. APS 00875
L9 $\frac{7}{8}$ " W4 $\frac{7}{8}$ " H $\frac{1}{2}$ "
Olive Wood
1 pc.



Wood Serving Board
No. APS 00876
L13" W6 $\frac{1}{4}$ " H $\frac{1}{2}$ "
Olive Wood
1 pc.



Wood Serving Board
No. APS 00877
L15 $\frac{3}{4}$ " W7 $\frac{7}{8}$ " H $\frac{1}{2}$ "
Olive Wood
1 pc.



Wood Serving Board Oval
No. APS 00905
L10" W6 $\frac{1}{2}$ " H $\frac{1}{2}$ "
Olive Wood
1 pc.



Wood Serving Board Oval
No. APS 00906
L13 $\frac{3}{4}$ " W8" H $\frac{1}{2}$ "
Olive Wood
1 pc.

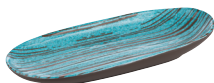
CANCUN

NEW

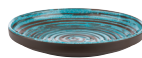
Blue and brown melamine dinnerware and serveware add a taste of the tropics to presentations indoors and out.



Rectangle Tray
No. APS 85200
W5 $\frac{5}{8}$ " L9 $\frac{1}{4}$ "
Turquoise/Brown
6 pcs.



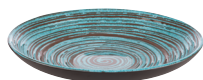
Platter
No. APS 85201
W5 $\frac{1}{2}$ " L11"
Turquoise/Brown
6 pcs.



High Rim Plate
No. APS 85202
D7" H1 $\frac{1}{8}$ "
Turquoise/Brown
6 pcs.



High Rim Plate
No. APS 85203
D9" H1 $\frac{3}{8}$ "
Turquoise/Brown
6 pcs.



Deep Coupe Plate
No. APS 85204
W10" H1 $\frac{3}{4}$ "
Turquoise/Brown
6 pcs.



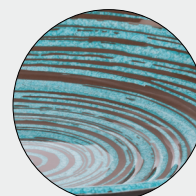
Bowl
No. APS 85205
D5 $\frac{5}{8}$ " H2 $\frac{3}{4}$ "
16 oz.
Turquoise/Brown
8 pcs.



Bowls
No. APS 85206
D7 $\frac{1}{4}$ " H3 $\frac{1}{8}$ "
33 oz.
Turquoise/Brown
6 pcs.



Bowl
No. APS 85208
D9 $\frac{1}{2}$ " H3 $\frac{1}{2}$ "
60 oz.
Turquoise/Brown
6 pcs.



Detailing

LOOPS

NEW

Alternating between matte and shine finishes, Loops melamine dinnerware and serveware features a blue and grey concentric circle design perfect for modern buffet presentations.

All items



85201



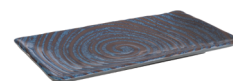
Oblong Side Bowl
No. APS 85024
 L13¾" W6" H1½"
 20 oz.
 Dark Blue
 6 pcs.



Oval Platter
No. APS 85055
 L11" W5⅝" H1½"
 Dark Blue
 6 pcs.



GN 1/2 Tray
No. APS 85021
 L12¾" W10½" H½"
 GN 1/2
 Dark Blue
 5 pcs.



Rectangle Tray
No. APS 85025
 L9¼" W5⅝" H½"
 Dark Blue
 6 pcs.



Plate
No. APS 85027
 D8½" H¾"
 Dark Blue
 6 pcs.

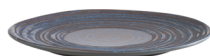


Plate
No. APS 85028
 D10½" H¾"
 Dark Blue
 1 pc.



High Rim Plate
No. APS 85026
 D7" H1⅝"
 Dark Blue
 6 pcs.



High Rim Plate
APS 85056
 D9" H1⅝"
 Dark Blue
 6 pcs.



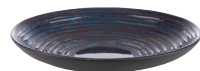
Bowl
No. APS 85036
 D5⅞" H2¾"
 16 oz.
 Dark Blue
 8 pcs.



Bowl
No. APS 85037
 D7¼" H3⅞"
 33 oz.
 Dark Blue
 1 pc.



Bowl
No. APS 85038
 D9½" H3½"
 60 oz.
 Dark Blue
 6 pcs.



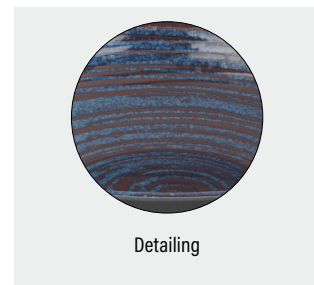
Deep Coupe Plate
No. APS 85057
 D10" H1¾"
 Dark Blue
 6 pcs.



Deep Coupe Bowl
No. APS 85029
 D8" H2½"
 33 oz.
 Dark Blue
 1 pc.



Deep Coupe Bowl ●
No. APS 85030
 D12¼" H3⅞"
 67 oz.
 Dark Blue
 6 pcs.



NERO

NEW

Daring black melamine dinnerware features soft matte finish and ribbed interior texture. Organic shapes and innovative compartments for sauces and dips make this collection a standout.

All items



85068, 85067



Deep Coupe Bowl
No. APS 85060
D8 $\frac{7}{8}$ " H1 $\frac{3}{4}$ "
27 oz.
Black
6 pcs.



Bowl
No. APS 85061
D9 $\frac{1}{2}$ " H1 $\frac{5}{8}$ "
57 oz.
Black
6 pcs.



Rim Soup Plate
No. APS 85098
W11 $\frac{1}{2}$ " H2 $\frac{3}{8}$ "
10 oz.
Black
6 pcs.



Ramen Bowl
No. APS 85069
D6 $\frac{3}{8}$ " H2 $\frac{1}{2}$ "
16 oz.
Black
6 pcs.



Ramen Bowl
No. APS 85070
D7 $\frac{1}{2}$ " H3 $\frac{3}{8}$ "
30 oz.
Black
6 pcs.



Ramen Bowl
No. APS 85062
D11 $\frac{7}{8}$ " H2 $\frac{3}{4}$ "
74 oz.
Black
6 pcs.



Square Bowl
No. APS 85071
D7 $\frac{3}{4}$ " H3 $\frac{1}{8}$ "
50 $\frac{5}{8}$ oz.
Black
6 pcs.



Square Bowl
No. APS 85072
D9 $\frac{9}{8}$ " H4 $\frac{3}{8}$ "
118 oz.
Black
4 pcs.



Plate
No. APS 85073
D6" H1 $\frac{1}{8}$ "
Black
1 doz.



Plate
No. APS 85063
D8 $\frac{1}{4}$ " H1 $\frac{1}{8}$ "
Black
6 pcs.



Plate
No. APS 85064
D10 $\frac{1}{4}$ " H1 $\frac{1}{8}$ "
Black
6 pcs.



Plate
No. APS 85065
D13" H1 $\frac{3}{8}$ "
Black
6 pcs.



Plate
No. APS 85066
D16 $\frac{1}{2}$ " H1 $\frac{5}{8}$ "
Black
6 pcs.



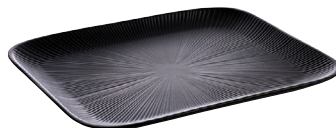
Plate
No. APS 85074 ●
D9 $\frac{1}{2}$ " H1 $\frac{1}{4}$ "
1 $\frac{1}{4}$ oz.
Black
6 pcs.



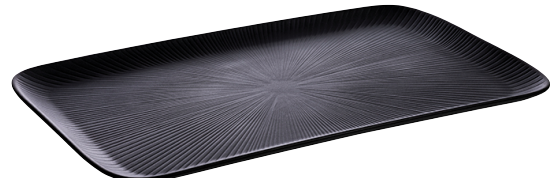
Plate
No. APS 85075 ●
D11 $\frac{1}{8}$ " H2"
2 oz.
Black
1 doz.



Tray with Sauce Cups ●
No. APS 85097
L16 $\frac{1}{8}$ " W6" H1"
Black
9 pcs.



GN 1/2 tray
No. APS 85068
L12 $\frac{3}{4}$ " W10 $\frac{1}{2}$ " H1"
GN 1/2
Black
6 pcs.



GN 1/1 tray
No. APS 85067
L20 $\frac{7}{8}$ " W12 $\frac{3}{4}$ " H1"
GN 1/1
Black
4 pcs.



Detailing

BLUE OCEAN

Made of durable melamine yet featuring the look of enameled porcelain, its aqua tones, gradients and classic blue and white are reminiscent of a Greek tavern on the Aegean Sea. Rectangular products offer compatibility with the Superbox system as well as standard GN stands and covers.

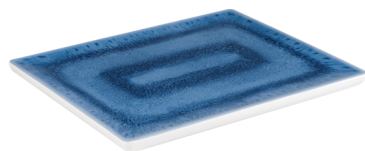
All items



84671, 84672, 84673

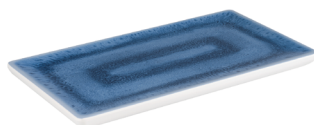


84674, 84675, 64676, 84677, 84678



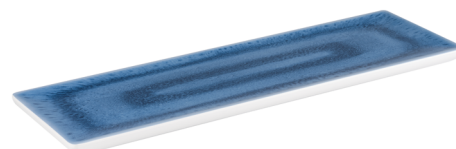
GN tray
No. APS 84671
L12 $\frac{5}{8}$ " W10 $\frac{1}{2}$ " H $\frac{7}{8}$ "
GN 1/2
Blue Enamel / White
6 pcs.

Compatible with:
APS 11041 GN 1/2 cover
APS 11022 GN 1/2 cover with opening



GN 1/3 tray
No. APS 84672
L12 $\frac{5}{8}$ " W7" H $\frac{7}{8}$ "
GN 1/3
Blue Enamel / White
1 doz.

Compatible with:
APS 11043 GN 1/3 cover



GN 2/4 tray
No. APS 84673
L20 $\frac{5}{8}$ " W6 $\frac{1}{2}$ " H $\frac{7}{8}$ "
GN 2/4
Blue Enamel / White
6 pcs.

Compatible with:
APS 11044 GN 2/4 cover



Plate
No. APS 84674
D8 $\frac{1}{2}$ " H $\frac{7}{8}$ "
Blue Enamel / White
1 doz.



Plate
No. APS 84675
D10 $\frac{1}{2}$ " H $\frac{7}{8}$ "
Blue Enamel / White
1 doz.



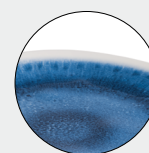
Tray
No. APS 84676
L19" W14" H1 $\frac{1}{4}$ "
Blue Enamel / White
6 pcs.



Bowl
No. APS 84677
D6" H3"
20% oz.
Blue Enamel / White
1 doz.



Bowl
No. APS 84678
D12 $\frac{1}{2}$ " H3 $\frac{3}{8}$ "
101 $\frac{1}{2}$ oz.
Blue Enamel / White
6 pcs.



Detailing



EMMA

Richly hued melamine serveware goes anywhere you do – ideal for high-traffic and outdoor venues.

All items



85129, 85133



Bowl
No. APS 85101
L3" W3" H1 $\frac{3}{8}$ "
2 oz.
Blue
1 pc.



Bowl
No. APS 85105
L5 $\frac{1}{2}$ " W5 $\frac{1}{2}$ " H2 $\frac{1}{2}$ "
17 oz.
Blue
1 pc.



Bowl
No. APS 85109
L9" W9" H4 $\frac{1}{8}$ "
77 $\frac{3}{4}$ oz.
Blue
1 pc.



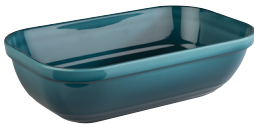
Stackable



GN 1/4 Tray
No. APS 85121
L6 $\frac{3}{8}$ " W10 $\frac{3}{8}$ " H1 $\frac{1}{8}$ "
GN 1/4
Blue
1 pc.



GN 1/2 Tray
No. APS 85125
L10 $\frac{3}{8}$ " W12 $\frac{3}{4}$ " H1 $\frac{1}{8}$ "
GN 1/2
Blue
1 pc.



GN 1/4 Bowl
No. APS 85129
L6 $\frac{3}{8}$ " W10 $\frac{3}{8}$ " H3"
GN 1/4
47 $\frac{1}{4}$ oz.
Blue
1 pc.



GN 1/2 Bowl
No. APS 85133
L10 $\frac{3}{8}$ " W12 $\frac{3}{4}$ " H3"
GN 1/2
118 $\frac{1}{4}$ oz.
Blue
1 pc.



ANTI PASTI

Smooth melamine bowls are ideal for buffets and cold plates, featuring a shallow, decorative flared edge.



Bowl
No. APS 15135 *
D5 $\frac{3}{4}$ " H1"
White
10 pcs.

Bowl
No. APS 15137
D13 $\frac{3}{8}$ " H1 $\frac{1}{8}$ "
White
6pcs.
(No photo available)

Compatible with
APS 06512 Cover with knob, large

ASIA PLUS

With Plus system compatibility, nearly all Asia Plus products feature interconnecting rings that allow them to be reliably combined with each other. For example, all bowls and baskets can be used as risers to a wide range of other Plus system products.

Features duo-toned bowls with a unique cream color, affording a Zen sensibility. Nestable bowls help maximize storage space, and compatible covers allow for stacking bowls with prepped food along with spoons for easy transportation.

Works great with other Asia Plus products shown on pages 30 and 50.

All items



15452, 15450



Bowl
No. APS 15400
D3" H1½"
2½ oz.
Cream / Taupe
5 doz.



Bowl
No. APS 15401
D3¾" H1⅞"
4½ oz.
Cream / Taupe
30 pcs.



Bowl
No. APS 15402
D5½" H2¼"
11½ oz.
Cream / Taupe
10 pcs.



Bowl
No. APS 15403
D6⅝" H2⅞"
20½ oz.
Cream / Taupe
1 doz.



Bowl
No. APS 15404
D7⅞" H3¼"
37¼ oz.
Cream / Taupe
1 doz.



Plate
No. APS 15424
D4⅝" H⅞"
White
6 doz.



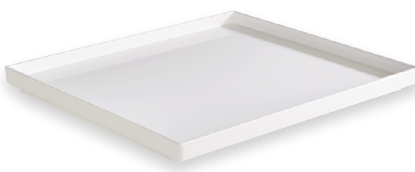
Plate
No. APS 15425
D6⅝" H⅞"
White
10 pcs.



Plate
No. APS 15428
D11⅞" H⅞"
White
10 pcs.



GN 1/4 tray
No. APS 15452
L10½" W6½" H1¼"
GN 1/4
White
6 pcs.



GN 1/2 tray
No. APS 15450
L12⅞" W10½" H1¼"
GN 1/2
White
4 pcs.

Compatible with:
APS 11041 GN 1/2 cover
APS 11022 GN 1/2 cover with opening



Nesting Bowls

Bowls feature duo-toned color palette – cream inside with taupe textured outside.



Compatible Lids



BALANCE

Bowls with a unique sloping shape feature non-slip feet for added stability. A pronounced ridge around the top supports better grip and consistent stacking.



Bowl
No. APS 84040
D5 $\frac{3}{4}$ " H3 $\frac{3}{8}$ "
13 $\frac{5}{8}$ oz.
White
10 pcs.



Bowl
No. APS 84041
D8 $\frac{3}{8}$ " H5 $\frac{1}{8}$ "
50 $\frac{3}{4}$ oz.
White
10 pcs.



Bowl
No. APS 84042
D9 $\frac{3}{4}$ " H6"
84 $\frac{5}{8}$ oz.
White
8 pcs.



Bowl
No. APS 84043
D11 $\frac{7}{8}$ " H7 $\frac{3}{4}$ "
169 $\frac{1}{8}$ oz.
White
6 pcs.



Shown: Balance bowls and King stand



Features non-slip feet.



Fits King buffet stand APS 03622,
and APS 03623 on page 49.

ELEMENT

Trend-forward concrete styles introduce bold new display possibilities, without the challenges that using actual concrete for food contact would create. Element offers a range of presentation bowls and trays, which can be beautifully integrated into any rustic, natural or even urban buffet landscape.

Works great with other Element products shown on pages 62, 65, 68, and 69.

All items



84828, 84829, 84835, 84836, 84837



84830, 84831



84400, 84401, 84402, 84403, 84404



Bowl
No. APS 84830
L7½" W7½" H3⅝"
50¾ oz.
Patterned Concrete
4 pcs.

Compatible with:
APS 83600 Cover with spoon notch



Bowl
No. APS 84831
L9⅞" W9⅞" H4¾"
128½ oz.
Patterned Concrete
4 pcs.

Compatible with:
APS 83601 Cover with spoon notch



Round bowl
No. APS 84828
D6⅜" H2⅞"
17 oz.
Patterned Concrete
4 pcs.



Round bowl
No. APS 84829
D11⅞" H4¾"
101½ oz.
Patterned Concrete
6 pcs.

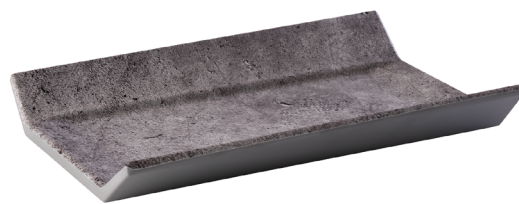
Features the look of patterned concrete in cool gray tones. These two bowls are compatible with Pure system components (pages 23, 58 and 76), which are focused on streamlining operations for staff.



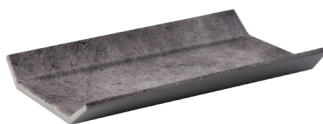
Tray
No. APS 84824
L12¼" W4¼" H5⅝"
Patterned Concrete
6pcs.



GN 1/2 Tray
No. APS 84401
L12⅞" W10½" H1½"
GN 1/2
Dark Patterned Concrete
4 pcs.



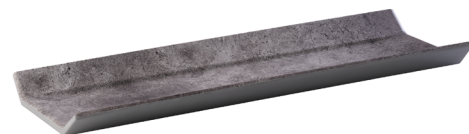
GN 1/1 Tray
No. APS 84400
L20⅞" W12⅞" H1½"
GN 1/1
Dark Patterned Concrete
4 pcs.



GN 1/3 Tray
No. APS 84402
L12⅞" W7" H1½"
GN 1/3
Dark Patterned Concrete
4 pcs.



GN 1/4 Tray
No. APS 84403
L10½" W6½" H1½"
GN 1/4
Dark Patterned Concrete
4 pcs.



GN 2/4 Tray
No. APS 84404
L20⅞" W6½" H1½"
GN 2/4
Dark Patterned Concrete
4 pcs.



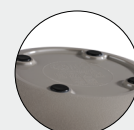
Bowl
No. APS 84835
D8½" H3¾"
23¾ oz.
Concrete Look
4 pcs.



Bowl
No. APS 84836
D10¼" H5"
49⅞ oz.
Concrete Look
3pcs.



Bowl
No. APS 84837
D11⅞" H5¾"
77⅞ oz.
Concrete Look
2pcs.



Features non-slip feet.

The warm gray color mirrors the look of real concrete and matches other concrete-like products.

ZERO

Build your presentation with GN trays. Available in two colors, the trays fit on top of the Superboxes (pages 38-39).



GN 1/1 Tray
APS 84185
L20 $\frac{1}{8}$ " W12 $\frac{1}{8}$ " H $\frac{5}{8}$ "
GN 1/1
White
2 pcs.

Compatible with:
APS 11018 GN 1/1 rolltop cover
APS 11042 GN 1/1 cover
APS 11027 GN 1/1 cover with opening
APS 11028 GN 1/1 cover with opening



GN 1/2 Tray
APS 84186
L12 $\frac{1}{8}$ " W10 $\frac{1}{2}$ " H $\frac{5}{8}$ "
GN 1/2
White
5 pcs.

Compatible with:
APS 11041 GN 1/2 cover
APS 11022 GN 1/2 cover with opening



GN 1/4 Tray
APS 84188
L10 $\frac{1}{2}$ " W6 $\frac{1}{2}$ " H $\frac{5}{8}$ "
GN 1/4
White
5 pcs.



GN 2/4 Tray
APS 84189
L20 $\frac{1}{8}$ " W6 $\frac{1}{2}$ " H $\frac{5}{8}$ "
GN 2/4
White
5 pcs.

Compatible with:
APS 11044 GN 2/4 cover



Features non-slip feet.



Shown: Superbox sytem, Zero Trays,
Asia Plus plate, jars unavailable

FRAMES

A classic rimmed visual style is elegantly understated, leaving plenty of potential for creating appealing buffet arrangements. With its white rounded edges, it can complement styles that are both timeless and highly contemporary. Compatible with standard GN sized stands and covers.

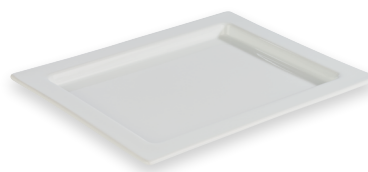
Works great with other Frames products on pages 41, 46 and 63.



GN 1/1 tray
APS 82355
 L20 $\frac{7}{8}$ " W12 $\frac{7}{8}$ " H $\frac{7}{8}$ "
 GN 1/1
 White
 6 pcs.

Compatible with:

APS 11042 GN 1/1 cover
APS 11018 GN 1/1 rolltop cover
APS 11027 GN 1/1 cover with opening
APS 11028 GN 1/1 cover with opening



GN 1/2 tray
APS 82356
 L12 $\frac{7}{8}$ " W10 $\frac{1}{2}$ " H $\frac{7}{8}$ "
 GN 1/2
 White
 1 doz.

Compatible with:

APS 11041 GN 1/2 cover
APS 11022 GN 1/2 cover with opening



GN 1/3 tray
APS 82357
 L12 $\frac{7}{8}$ " W7" H $\frac{7}{8}$ "
 GN 1/3
 White
 16 pcs.

Compatible with:

APS 11043 GN 1/3 cover



PURE

Create a clean aesthetic with simple, monochromatic shapes that let your food do the talking. Bowls are compatible with other Pure system components, which are focused on streamlining operations for staff. For example, grooves on compatible covers (see page 76) enable secure stacking along with a notch that reliably holds a spoon in place, for quick, ready-for-setup transportation.

All items



83401, 83433, 83480, 83481, 83482



GN 1/1 tray
No. APS 83401
L20 $\frac{7}{8}$ " W12 $\frac{5}{8}$ " H1 $\frac{1}{4}$ "
GN 1/1
White
4 pcs.

Compatible with:
APS 11018 GN 1/1 rolltop cover
APS 11042 GN 1/1 cover
APS 11027 GN 1/1 cover with opening
APS 11028 GN 1/1 cover with opening



GN 1/2 tray
No. APS 83480
L12 $\frac{7}{8}$ " W10 $\frac{1}{2}$ " H1 $\frac{1}{4}$ "
GN 1/2
White
4 pcs.

GN 1/2 Tray
No. APS 83490
L12 $\frac{7}{8}$ " W10 $\frac{1}{2}$ " H1 $\frac{1}{4}$ "
GN 1/2
Black
4 pcs.

Compatible with:
APS 11041 GN 1/2 cover
APS 11022 GN 1/2 cover with opening



GN 1/3 tray
No. APS 83481
L12 $\frac{7}{8}$ " W7" H1 $\frac{1}{4}$ "
GN 1/3
White
6 pcs.

GN 1/3 Tray *
No. APS 83491
L12 $\frac{7}{8}$ " W7" H1 $\frac{1}{4}$ "
GN 1/3
Black
6 pcs.

Compatible with:
APS 11043 GN 1/3 cover



GN 2/4 tray
No. APS 83433
L20 $\frac{7}{8}$ " W6 $\frac{1}{2}$ " H1 $\frac{1}{4}$ "
GN 2/4
White
4 pcs.

GN 2/4 Tray *
No. APS 83434
L20 $\frac{7}{8}$ " W6 $\frac{1}{2}$ " H1 $\frac{1}{4}$ "
GN 2/4
Black
4 pcs.

Compatible with:
APS 11044 GN 2/4 cover



GN 1/4 tray
No. APS 83482
L10 $\frac{1}{2}$ " W6 $\frac{3}{8}$ " H1 $\frac{1}{4}$ "
GN 1/4
White
5 pcs.

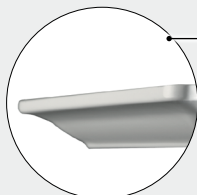
GN 1/4 Tray
APS 83492
L10 $\frac{1}{2}$ " W6 $\frac{3}{8}$ " H1 $\frac{1}{4}$ "
GN 1/4
Black
5 pcs.



Tray *
No. APS 83406
L10 $\frac{1}{2}$ " W10 $\frac{1}{2}$ " H1 $\frac{1}{4}$ "
White
5 pcs.

Tray
No. APS 83407
L8 $\frac{3}{4}$ " W8 $\frac{3}{8}$ " H1 $\frac{1}{4}$ "
White
5 pcs.

Tray
No. APS 83418
L7 $\frac{3}{8}$ " W7 $\frac{3}{8}$ " H1 $\frac{1}{4}$ "
White
10 pcs.



Profile is designed to support better grip and durable stand integration

Most trays are compatible with standard GN stands.





Tray
APS 83417
L11 $\frac{1}{8}$ " W8 $\frac{3}{8}$ " H1 $\frac{1}{4}$ "
White
5 pcs.



Tray
APS 83403
L14" W7 $\frac{1}{8}$ " H1 $\frac{1}{4}$ "
White
6 pcs.



Tray
APS 83597
L15 $\frac{3}{4}$ " W11 $\frac{1}{8}$ " H1 $\frac{1}{4}$ "
Bakery size
White
6 pcs.



Tray / plate *
APS 83884
D12 $\frac{1}{4}$ " H1 $\frac{1}{4}$ "
White
5 pcs.

Tray / plate
APS 83484
D20 $\frac{1}{8}$ " H1 $\frac{1}{4}$ "
White
6 pcs.



Bowl
No. APS 84425
L12 $\frac{5}{8}$ " W12 $\frac{5}{8}$ " H5 $\frac{5}{8}$ "
270 $\frac{5}{8}$ oz.
White
4 pcs.

Bowl
No. APS 84427
L12 $\frac{5}{8}$ " W12 $\frac{5}{8}$ " H5 $\frac{5}{8}$ "
270 $\frac{5}{8}$ oz.
Black
4 pcs.



Bowl
No. APS 83408
L10 $\frac{1}{8}$ " W10 $\frac{1}{8}$ " H4 $\frac{3}{4}$ "
128 $\frac{1}{2}$
White
3 pcs.

Bowl
No. APS 83469
L10 $\frac{1}{8}$ " W10 $\frac{1}{8}$ " H4 $\frac{3}{4}$ "
128 $\frac{1}{2}$ oz.
Black
3 pcs.



Bowl
No. APS 83409
L7 $\frac{1}{2}$ " W7 $\frac{1}{2}$ " H3 $\frac{5}{8}$ "
50 $\frac{3}{4}$ oz.
White
5 pcs.

Bowl
No. APS 83468
L7 $\frac{1}{2}$ " W7 $\frac{1}{2}$ " H3 $\frac{5}{8}$ "
50 $\frac{3}{4}$ oz.
Black
5 pcs.

Compatible with:
APS 83601 Cover with spoon notch

Compatible with:
APS 83600 Cover with spoon notch



Bowl
No. APS 83410
L5" W5" H2 $\frac{3}{8}$ "
13 $\frac{3}{8}$ oz.
White
5 pcs.

Bowl
No. APS 83467
L5" W5" H2 $\frac{3}{8}$ "
13 $\frac{3}{8}$ oz.
Black
5 pcs.



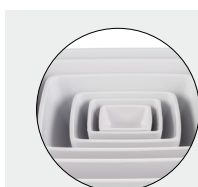
Bowl ●
No. APS 83414
L3 $\frac{5}{8}$ " W3 $\frac{5}{8}$ " H1 $\frac{5}{8}$ "
4 $\frac{3}{4}$ oz.
White
20 pcs.

Bowl
No. APS 83466
L3 $\frac{5}{8}$ " W3 $\frac{5}{8}$ " H1 $\frac{5}{8}$ "
4 $\frac{3}{4}$ oz.
Black
20 pcs.



Bowl
No. APS 84424
L2 $\frac{5}{8}$ " W2 $\frac{5}{8}$ " H1 $\frac{1}{4}$ "
1 $\frac{3}{4}$ oz.
White
5 doz.

Bowl
No. APS 84426
L2 $\frac{5}{8}$ " W2 $\frac{5}{8}$ " H1 $\frac{1}{4}$ "
1 $\frac{3}{4}$ oz.
Black
5 doz.



Nesting



GLOBAL BUFFET

Melamine bowls and dishes with distinctive rippled finishes lend themselves to versatile buffet presentations.



Bowl
No. APS 83787
D15 $\frac{3}{4}$ " H5 $\frac{3}{8}$ "
169 $\frac{1}{8}$ oz.
White
5 pcs.

SUPERCUP

Is it a cup or a container? Why not both! The Supercup is a versatile, durable and eco-friendly alternative to single-use plastic cups, ideal for takeout and grab-and-go stations.



Supercup †
No. APS 10506
L3 $\frac{1}{8}$ " W3 $\frac{1}{8}$ " H4"
8 $\frac{1}{2}$ oz.
Clear
1 set, 16 pcs./set: 8 cups + 8 lids



Stacking

Impact-resistant plastic is made to last.

SERVING BOX

Create bento box-style displays with this customizable collection of wood-look serving boxes and bowls. Sleek, stackable and easy to transport, they are ideal for serving individual portions.



Serving Box
No. APS 85088
L9 $\frac{7}{8}$ " W11 $\frac{3}{4}$ " H3 $\frac{1}{8}$ "
7 oz.
Concrete/Black
1 set, 7 pcs./set



Large 7 pc. set:
• 1 box + 1 cover
• 1 bowl large (L9" W5 $\frac{1}{2}$ " H2 $\frac{1}{4}$ ", 47 oz.)
• 1 bowl medium (L5 $\frac{1}{2}$ " W4 $\frac{1}{2}$ " H2 $\frac{1}{4}$ ", 20 oz.)
• 2 bowls small (L4 $\frac{1}{2}$ " W3 $\frac{3}{4}$ " H2 $\frac{1}{4}$ ", 8 $\frac{1}{2}$ oz.)
• 1 non-slip mat (L10" W8")



Stackable

PINEAPPLE

Pineapple-shaped serving dish made of highly durable melamine provides a creative way to showcase your fun and fresh fruit servings.



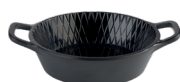
Pineapple Tray
APS 84624
L11 $\frac{1}{8}$ " W6 $\frac{3}{4}$ " H1"
White



MINIS

NEW

Small, individually sized dishes provide a quick and easy way for guests to grab an artfully plated serving.



Two-handed bowl
No. APS 84778
L3 $\frac{3}{8}$ " W4 $\frac{5}{8}$ " H1"
2 $\frac{3}{8}$ oz.
Black Hammered
60 pcs.



Two-handed bowl
No. APS 84781
L3 $\frac{3}{8}$ " W4 $\frac{5}{8}$ " H1"
2 $\frac{3}{8}$ oz.
Gray Hammered
60 pcs.



Long handled bowl
No. APS 84779
L3 $\frac{3}{8}$ " W6 $\frac{1}{8}$ " H1"
2 $\frac{3}{8}$ oz.
Black Hammered
4 doz.



Long handled bowl
No. APS 84782
L3 $\frac{3}{8}$ " W6 $\frac{1}{8}$ " H1"
2 $\frac{3}{8}$ oz.
Gray Hammered
4 doz.



Assorted bowls
No. APS 84452
L4 $\frac{5}{8}$ " W3" H1 $\frac{1}{4}$ "
2 $\frac{1}{2}$ oz.
White
24 pcs.



Assorted bowls
No. APS 84454
L4 $\frac{5}{8}$ " W2 $\frac{3}{8}$ " H2 $\frac{1}{4}$ "
1 $\frac{1}{2}$ oz.
White
2 doz.



Assorted bowls
No. APS 84456
L3 $\frac{3}{8}$ " W2 $\frac{7}{8}$ " H2 $\frac{3}{8}$ "
2 $\frac{3}{8}$ oz.
White
2 doz.



Assorted bowls
No. APS 84458
L3 $\frac{1}{4}$ " W3 $\frac{1}{4}$ " H1 $\frac{5}{8}$ "
3 $\frac{1}{2}$ oz.
White
2 doz.



Assorted bowls
No. APS 84450
L3" W2 $\frac{7}{8}$ " H1 $\frac{1}{8}$ "
1 $\frac{1}{4}$ oz.
White
24 pcs.

SERVING POT

NEW

Make presentations shine from oven to table with this collection of brass and aluminum serving pots ideal for stews, saucy entrees and global cuisine.



Small Serving Pot
No. APS 40740
D4 $\frac{1}{2}$ " H3 $\frac{3}{8}$ "
20 $\frac{1}{2}$ oz.
1 pc.



Small Serving Pot
No. APS 40741
D5 $\frac{1}{4}$ " H1 $\frac{1}{8}$ "
10 $\frac{1}{2}$ oz.
1 pc.



Small Serving Pot
No. APS 40742
D6" H1 $\frac{1}{2}$ "
17 oz
1 pc.

MUMBAI

NEW

Make presentations shine with this collection of stainless steel bowls and handled pans in a hammered mirror finish, available in stainless steel and copper colorways. Ideal for stews, saucy entrees and global cuisine.

All Items



STAINLESS
STEEL

40735, 40736, 40737, 40738



Small Serving Pot
No. APS 40186
D3¾" H2½"
10 oz.
Stainless Steel
1 pc.



Small Serving Pot
No. APS 40187
D5¾" H2"
18½ oz.
Stainless Steel
1 pc.



Small Serving Pot
No. APS 40188
D6" H2"
25½ oz.
Stainless Steel
1 pc.



Small Serving Pot
No. APS 40730
D3½" H2½"
10 oz.
Copper
1 pc.



Small Serving Pot
No. APS 40731
D4½" H1¾"
11½ oz.
Copper
1 pc.



Small Serving Pot
No. APS 40732
D4½" H2¾"
20 oz.
Copper
1 pc.



Small Serving Pot
No. APS 40733
D5½" H2"
16 oz.
Copper
1 pc.



Small Serving Pot
No. APS 40734
D6¾" H2"
23½ oz.
Copper
1 pc.



Small Serving Pan
No. APS 40735
L5" W3¾" H1½"
8¾ oz.
Copper
1 pc.



Small Serving Pan
No. APS 40736
L5¾" W3¾" H1¾"
5½ oz.
Copper
1 pc.



Bowl
No. APS 40737
D3¾" H1½"
5 oz.
Copper/Stainless Steel
1 pc.



Bowl
No. APS 40738
D3½" H2"
6¾ oz.
Copper/Stainless Steel
1 pc.



SERVING CAN

Add a modern, industrial look to buffets and table service with these sturdy metal snack cans.



Snack Can
No. APS 40658
L5¾" W5¾" H5½"
60¾ oz.
1 pc.



Snack Can
No. APS 40659
L4¾" W4¾" H3¾"
27 oz.
1 pc.



Snack Can
No. APS 40657
L5¾" W5¾" H4½"
44 oz.
1 pc.



Snack Can
No. APS 40656
L3" W3" H4"
11¾ oz.
1 pc.



Snack Can
No. APS 40655
L3" W3" H2½"
5¾ oz.
1 pc.



STAINLESS
STEEL



SNACKHOLDER

NEW

Handled metal basket gives french fries and other snacks a fun "straight from the fryer" look. Available in three colorways. This mini handled stainless steel roasting-style pan is perfect for serving appetizers and other single-serving snacks.



Fry Basket
No. APS 40600
L6 $\frac{7}{8}$ " W3 $\frac{1}{8}$ " H4 $\frac{3}{8}$ "
Stainless Steel
1 pc.

Fry Basket *
No. APS 40602
L6 $\frac{7}{8}$ " W3 $\frac{1}{8}$ " H4 $\frac{3}{8}$ "
Gold
1 pc.

Fry Basket
No. APS 40624
L6 $\frac{7}{8}$ " W3 $\frac{1}{8}$ " H4 $\frac{3}{8}$ "
Black
1 pc.



Fry Basket *
No. APS 40601
L7 $\frac{1}{4}$ " W3 $\frac{1}{2}$ " H5 $\frac{1}{8}$ "
Stainless Steel
1 pc.

Fry Basket
No. APS 40603
L7 $\frac{1}{4}$ " W3 $\frac{1}{2}$ " H5 $\frac{1}{8}$ "
Gold
1 pc.

Fry Basket
No. APS 40625
L7 $\frac{1}{4}$ " W3 $\frac{1}{2}$ " H5 $\frac{1}{8}$ "
Black
1 pc.



Fry Basket *
No. APS 40610
L12 $\frac{1}{4}$ " W4 $\frac{1}{8}$ " H2 $\frac{3}{4}$ "
Stainless Steel
1 pc.

Fry Basket
No. APS 40612
L12 $\frac{1}{4}$ " W4 $\frac{1}{8}$ " H2 $\frac{3}{4}$ "
Gold
1 pc.

Fry Basket
No. APS 40626
L12 $\frac{1}{4}$ " W4 $\frac{1}{8}$ " H2 $\frac{3}{4}$ "
Black
1 pc.



Fry Basket
No. APS 40611
L14" W5 $\frac{1}{8}$ " H2 $\frac{3}{4}$ "
Stainless Steel
1 pc.

Fry Basket
No. APS 40613
L14" W5 $\frac{1}{8}$ " H2 $\frac{3}{4}$ "
Gold
1 pc.

Fry Basket *
No. APS 40627
L14" W5 $\frac{1}{8}$ " H2 $\frac{3}{4}$ "
Black
1 pc.



Fry Basket
No. APS 40620
L7 $\frac{1}{2}$ " W3 $\frac{3}{8}$ " H4 $\frac{3}{8}$ "
Stainless Steel
1 pc.

Fry Basket *
No. APS 40622
L7 $\frac{1}{2}$ " W3 $\frac{3}{8}$ " H4 $\frac{3}{8}$ "
Gold
1 pc.

Fry Basket
No. APS 40628
L7 $\frac{1}{2}$ " W3 $\frac{3}{8}$ " H4 $\frac{3}{8}$ "
Black
1 pc.



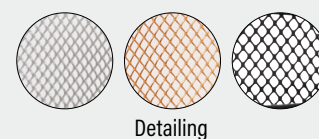
Fry Basket *
No. APS 40621
L10 $\frac{1}{4}$ " W4 $\frac{1}{8}$ " H6 $\frac{7}{8}$ "
Stainless Steel
1 pc.

Fry Basket
No. APS 40623
L10 $\frac{1}{4}$ " W4 $\frac{1}{8}$ " H6 $\frac{7}{8}$ "
Gold
1 pc.

Fry Basket
No. APS 40629
L10 $\frac{1}{4}$ " W4 $\frac{1}{8}$ " H6 $\frac{7}{8}$ "
Black
1 pc.



Mini Pan
No. APS 40660
L5 $\frac{3}{4}$ " W3 $\frac{3}{4}$ " H2 $\frac{1}{2}$ "
Stainless Steel
1 pc.



URBAN

NEW

Heavy duty wire baskets come in a variety of unique shapes and feature a metal base for added strength. Compatible with APS Germany covers and coordinates with any buffet display.

Works great with other Urban products shown on pages 30, 54, and 66.

All items



30414, 30415, 30416



Basket Round
No. APS 30410
D6 $\frac{5}{8}$ " H3 $\frac{3}{4}$ "
Black
1 pc.



Basket Round
No. APS 30411
D7 $\frac{7}{8}$ " H3 $\frac{3}{8}$ "
Black
1 pc.



Basket
No. APS 30337
L11 $\frac{1}{2}$ " W6 $\frac{3}{8}$ " H2 $\frac{3}{4}$ "
Black
1 pc.



Basket
No. APS 30412
L8 $\frac{3}{8}$ " W4" H2 $\frac{1}{4}$ "
Black
1 pc.



Basket
No. APS 30413
L11 $\frac{1}{8}$ " W5 $\frac{1}{2}$ " H4 $\frac{3}{4}$ "
Black
1 pc.



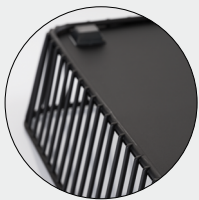
GN Basket
No. APS 30414
L20 $\frac{5}{8}$ " W12 $\frac{3}{4}$ " H3"
GN 1/1
Black
1 pc.



GN 1/2 Basket
No. APS 30415
L12 $\frac{3}{4}$ " W10 $\frac{5}{8}$ " H3"
GN 1/2
Black
1 pc.



GN Basket
No. APS 30416
L20 $\frac{5}{8}$ " W6 $\frac{5}{8}$ " H3"
GN 2/4
Black
1 pc.



Features non-slip feet.



Shown: Svart baskets and olive wood tray

SVART

NEW

Serve up modern elegance with these versatile black metal baskets featuring a vertical design. Stackable baskets are perfect for bread service, fruit and single-serve items.



Basket Round
No. APS 30420
D6½" H3½"
Black
1 pc.



Basket Round
No. APS 30421
D7⅞" H3⅞"
Black
1 pc.



Basket
No. No. APS 30422
L7⅞" W6" H3⅞"
Black
1 pc.



Basket
No. APS 30423
L9½" W7½" H3⅞"
Black
1 pc.



Basket
No. APS 30424
L11½" W10" H5⅞"
Black
1 pc.

GN BASKETS

Hand-braided polypropylene features a natural-looking matte finish. This creates an authentic look while adding a higher grade of lasting durability engineered for high-intensity usage and frequent dishwasher cycles. Great for creating a market stand style and highlighting your freshly made goods. Use on their own, with GN compatible stands and covers, or with the Superbox system.



GN Basket
No. APS 40240
L21½" W13" H4¼"
GN 1/1
Warm Wicker
1 doz.

Compatible with:

APS 11018 GN 1/1 rolltop cover
APS 11042 GN 1/1 cover
APS 11027 GN 1/1 cover with opening
APS 11028 GN 1/1 cover with opening

GN Basket

No. APS 40242
L13¼" W11¼" H4¼"
GN 1/2
Warm Wicker
2 doz.

Compatible with:

APS 11041 GN 1/2 cover
APS 11022 GN 1/2 cover with opening

GN Basket
No. APS 40244
L13" W7⅞" H4"
GN 1/3
Warm Wicker
36 pcs.

Compatible with:

APS 11043 GN 1/3 cover

GN Basket

No. APS 40246
L10⅞" W6½" H4¼"
GN 1/4
Warm Wicker
3 doz.



Stainless steel wire frame adds stability to the basket and helps maintain its shape.



DISPENSERS

All dispensers are meticulously engineered to keep drinks and food fresh while also being extremely easy to set up and clean. Wide openings make it easy to add large ingredients, such as for infused waters that are great for lobby service. Both spigot and handled options are available for drinks or foods (cereal, granola, etc.), and spigots can be easily disassembled for simple, thorough cleaning. Also available are table service pitchers and bottle coolers.

URBAN

NEW

Beverage dispenser features ribbed glass dispenser and durable metal base with silicone anti-slip mat so you can confidently serve water and juice.

Works great with other Urban products shown on pages 28, 54, and 66.



Beverage Dispenser
No. APS 10451
D8½" H17¼"
Black
1 pc., includes stand



Silicone anti-slip mat

ASIA PLUS

Provide a distinctive look to your beverage service. The elegant thick-walled glass dispenser and stainless steel spigot sits on a black wood stand and includes a wooden lid.

Works great with other Other Asia Plus products shown on 17 and 50.



Drink dispenser with wood stand
No. APS 10403
D9¾" H18"
236¾ oz.
1 pc., includes stand



GLASS

WOOD

STAINLESS
STEEL

SILICONE

NON
SLIP FEET



Product images are scaled to 10% unless otherwise stated

ELEMENT

Add a contemporary vibe to your beverage service. The stylish glass dispenser rests on a trend-forward stand made of concrete and includes a matching lid.

Works great with other Element products shown on pages 19, 62, 65, 68, and 69.



**Drink Dispenser
with concrete stand**
No. APS 10400
D8¾" H17¾"
236¾ oz.
1 pc., includes stand



GLASS

CONCRETE

STAINLESS
STEEL

SILICONE



CLASSIC

Crafted from thick-walled glass with a ribbed texture, the drink dispenser features a wide opening to add a variety of ingredients for infused waters, iced teas or cocktails.



APS 10855

Drink dispenser
No. APS 10855
D7⅞" H12⅞"
236¾ oz.
1 pc.

APS 11627

APS 10851



GLASS

STAINLESS
STEEL

SILICONE



MF
MELAMINE

STAINLESS
STEEL



Drip tray
No. APS 10853
D3¾" H⅝"
Black
1 pc.



Drip tray
No. APS 10851
D3¾" H⅝"
White
1 pc.

Use with dispensers shown on page 30 and 31.

TOP FRESH

Add a dramatic look to your juice service. The juice dispenser features cooling elements in the mirror polished stainless steel base and lid and stainless steel spigot.

The striking mirror polished stainless steel milk dispenser includes a cooling element in the base to keep milk cold and a sleek spigot.

All items



10800, 10700



Juice dispenser with stainless steel stand
No. APS 10800
L12 $\frac{5}{8}$ " W8 $\frac{3}{8}$ " H17"
135 $\frac{1}{2}$ oz.
1 pc.



Juice dispenser with stainless steel stand
No. APS 10700
L13 $\frac{3}{8}$ " W9 $\frac{1}{8}$ " H20 $\frac{1}{2}$ "
203 oz.
1 pc.



Milk dispenser
No. APS 10750
L 9 $\frac{1}{8}$ " W13 $\frac{3}{8}$ " H17 $\frac{3}{4}$ "
169 $\frac{1}{2}$ oz.
Chrome
1 pc.

BRIDGE

Cooling elements in the lid and base keep juice cold. The contemporary looking dispenser features a stainless steel spigot and a black wood base.

Works great with other Bridge products on pages 34, 42 and 63.



Juice dispenser with wood stand
No. APS 10872
L12 $\frac{1}{4}$ " W7 $\frac{7}{8}$ " H17"
135 $\frac{1}{2}$ oz.
Black
1 pc.



Juice dispenser with wood stand
No. APS 10873
L14" W8 $\frac{3}{4}$ " H19 $\frac{3}{4}$ "
203 oz.
Black
1 pc.

Includes 3 magnetic labels:
orange, apple, grapefruit.

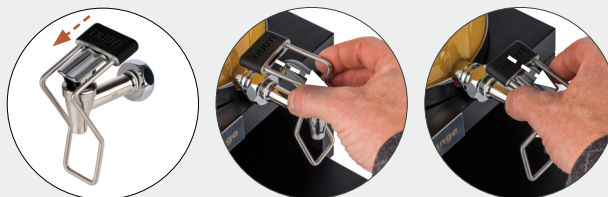


ADAPTER

The adapter fits all dispensers of the series Top Fresh and Bridge and can be installed very easily.
Suitable for dispensers on pages 32.



Adapter
No. APS 10802
L1¾" W4¾" H2½"
1 pc.



Simply plug the adapter onto the lever of the tap at the opening provided. Then tighten the adapter downwards. By pushing the lower stainless steel bracket forward with the help of the glass, the lever of the tap is activated and the drink flows into the glass completely without hand contact.



BOTTLE COOLER

Serve up to six bottles tableside and keep them cold in the bottle cooler. The cooler features a bottle opener and a bowl to hold bottle caps.



Bottle cooler
No. APS 00620
D9⅞" H6"
White
1 pc.



Bottle cooler
No. APS 00621
D9⅞" H6"
Black
1pc.



CARAFES



GLASS

STAINLESS
STEEL



Glass carafe with strainer
No. APS 10792
L4" L5 $\frac{5}{8}$ " H10 $\frac{1}{4}$ "
50 $\frac{3}{4}$ oz.
1 pc.

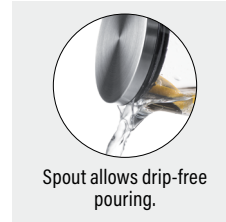


Spout allows drip-free pouring.

Offer guests infused water in a stylish glass carafe that features a spout for drip-free pouring and a matte polished stainless steel lid with an integrated strainer.



Glass carafe
No. APS 10764
D6 $\frac{3}{8}$ " L4" H10 $\frac{3}{4}$ "
50 $\frac{3}{4}$ oz.
1 doz.



Spout allows drip-free pouring.

Serve water or juices tableside in the glass carafe that features a spout for drip-free pouring and a stainless steel lid.

CEREAL



PP
POLYPROP.

SAN
STYRENE
ACRYLONITRILE

STAINLESS
STEEL



ACRYLIC

ABS
ACRYLONITRILE-
BUTADIENE-STYRENE

STAINLESS
STEEL



WOOD

SAN
STYRENE
ACRYLONITRILE

STAINLESS
STEEL
18/8



Cereal pitcher
No. APS 10778
L6 $\frac{1}{8}$ " W4 $\frac{1}{4}$ " H11 $\frac{1}{8}$ "
50 $\frac{3}{4}$ oz.
1 set, 2 pcs./set

Serve cereal in this handled pitcher with a stainless steel flap lid and airtight cover.



Cereal bar
No. APS 11973
L15" W6 $\frac{3}{4}$ " H11 $\frac{1}{4}$ "
50 $\frac{3}{4}$ oz.
1 set, 7 pcs./set

Offer multiple cereal options with the seven-piece set that includes a frosted acrylic stand, available in two sizes, three acrylic pitchers with stainless steel flap lids and three airtight covers.



Bridge Cereal dispenser †
No. APS 14987
D8 $\frac{3}{8}$ " W7 $\frac{7}{8}$ " H21 $\frac{1}{8}$ "
152 $\frac{1}{4}$ oz.
Black
1 pc.

Works great with other Bridge products on pages 32, 42, and 63.

Add a stylish look to a self-service cereal dispenser. The removable plastic canister, supported by a black wood base, includes a specially designed lid to keep cereal fresh. The stainless steel knob rotates to dispense cereal.

TRAYS

A range of classic, traditional style trays, many with a high-sheen or satin stainless steel finishes, offer a breadth of serving possibilities. They include sizes for either buffet presentations or for individual servings to the table. Ideal for room service and coffee or tea time.

TRAYS

Standard-sized stainless steel GN trays are compatible with a range of pieces for endless presentation possibilities.



GN 1/1 tray
No. APS 11100
L20 $\frac{3}{8}$ " W12 $\frac{3}{8}$ " H $\frac{5}{8}$ "
GN 1/1
Without decor-edge
Stainless
5 pcs.

Compatible with:
APS 11018 GN 1/1 rolltop cover
APS 11042 GN 1/1 cover
APS 11027 GN 1/1 cover with opening
APS 11028 GN 1/1 cover with opening



GN 1/1 tray
No. APS 11000
L20 $\frac{3}{8}$ " W12 $\frac{3}{8}$ " H $\frac{5}{8}$ "
GN 1/1
With decor-edge
Stainless
1 pc.

Compatible with:
APS 11018 GN 1/1 rolltop cover
APS 11042 GN 1/1 cover
APS 11027 GN 1/1 cover with opening
APS 11028 GN 1/1 cover with opening



Stackable GN 1/1 tray
with handles
No. APS 11300
L20 $\frac{3}{8}$ " W12 $\frac{3}{8}$ " H2 $\frac{1}{4}$ "
GN 1/1
Stainless
1 pc.

Compatible with:
APS 11305 GN 1/1 locking cover

Maximize serving with stackable trays that can be prepped and delivered together. Trays feature a decorative edge with a mirror polished finish and chrome plated handles.



GN 1/1 tray
No. APS 00388
L21 $\frac{3}{8}$ " W13 $\frac{1}{2}$ " H $\frac{5}{8}$ "
GN 1/1
With decor edge
Stainless
1 pc.

Compatible with:
APS 11018 GN 1/1 rolltop cover
APS 11042 GN 1/1 cover
APS 11027 GN 1/1 cover with opening
APS 11028 GN 1/1 cover with opening



Shown: Asia Plus

BUILD

RAISE THE BAR ON PRESENTATION VALUE

Varying the height of elements in your design can create dimension that adds visual interest. It also can help you maximize your available table space, especially ideal in tight spaces.

A taste of the collection

SUPERBOX SYSTEM



Versatile boxes can be used on their own and can integrate for anything from a simple display to elaborate installations.

STANDS



Flexibly create dramatic multi-level displays that also maximize your table space.

COOLING + HEATING SYSTEMS



Provide self-contained units for displaying, covering and keeping your cuisine and drinks cool.

SHELVES



Give displays much-needed height with stylish shelves that showcase your very best creations.

SUPERBOX SYSTEMS

These stackable and non-slip boxes can be connected to flat GN trays and also can be used individually. Flipping them over allows you to use them as either a flat surface or as a basket. They also connect horizontally with “bridge” pieces to allow for the creation of anything from elaborate installations to a simple display. Their casual, natural aesthetic lends itself to a relaxed, fresh market feel.

GN SUPERBOX

The foundation for the Superbox System, the boxes are made with acacia wood available in two tones – black and caramel acacia.



GN 1/1 Superbox
No. APS 11620
L21 $\frac{7}{8}$ " W13 $\frac{3}{8}$ " H4 $\frac{1}{4}$ "
GN 1/1
Caramel Acacia
1 pc.



GN 2/4 Superbox
No. APS 11623
L21 $\frac{7}{8}$ " W7 $\frac{3}{8}$ " H4 $\frac{1}{4}$ "
GN 2/4
Caramel Acacia
1pc.



GN 1/2 Superbox
No. APS 11621
L13 $\frac{3}{8}$ " W11 $\frac{1}{2}$ " H4 $\frac{1}{4}$ "
GN 1/2
Caramel Acacia
1 pc



GN 1/4 Superbox *
No. APS 11622
L11 $\frac{1}{2}$ " W7 $\frac{3}{8}$ " H4 $\frac{1}{4}$ "
GN 1/4
Caramel Acacia
1 pc.

GN 1/2 Superbox *
No. APS 11627
L13 $\frac{3}{8}$ " W11 $\frac{1}{2}$ " H4 $\frac{1}{4}$ "
GN 1/2
Black
1 pc.



GN 1/4 Superbox
No. APS 11628
L11 $\frac{1}{2}$ " W7 $\frac{3}{8}$ " H4 $\frac{1}{4}$ "
GN 1/4
Black
1 pc.

TALL GN SUPERBOX

Elevate presentations even further with these extra-tall superboxes that bring added dimension to your tablescape.



Tall GN 1/1 Superbox*
No. APS 11721
L13 $\frac{3}{4}$ " W21 $\frac{1}{2}$ " H7 $\frac{7}{8}$ "
GN 1/1
Brown
1 pc.

Tall GN 1/1 Superbox
No. APS 11723
L13 $\frac{3}{4}$ " W21 $\frac{1}{2}$ " H7 $\frac{7}{8}$ "
GN 1/1
Black
1 pc.



Tall GN 1/2 Superbox
No. APS 11722
L11 $\frac{1}{8}$ " W13 $\frac{3}{4}$ " H7 $\frac{7}{8}$ "
GN 1/2
Brown
1 pc.

Tall GN 1/2 Superbox*
No. APS 11724
L11 $\frac{1}{8}$ " W13 $\frac{3}{4}$ " H7 $\frac{7}{8}$ "
GN 1/2
Black
1 pc.

GN INSERT BOX

Keep food and beverages cold by adding ice or cooling packs to the insert box.



GN insert box
No. APS 11616
L20 $\frac{7}{8}$ " W12 $\frac{7}{8}$ " H3 $\frac{3}{8}$ "
GN 1/1
1 pc.
Fits: APS 11620, APS 11626



GN insert box
No. APS 11617
L12 $\frac{7}{8}$ " W10 $\frac{1}{2}$ " H3 $\frac{3}{8}$ "
GN 1/2
1 pc.
Fits: APS 11621, APS 11627

APS 11617



APS 11627

APS 11617



APS 11627

Use liner with ice or cooler pack to fit GN trays.

DRAWER SETS

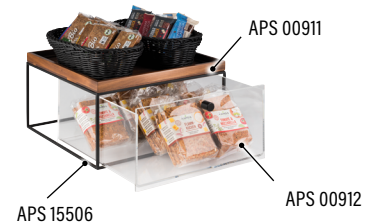
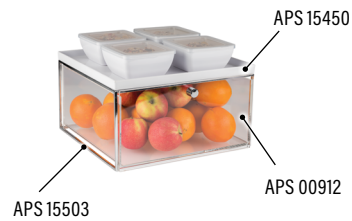
Clear storage drawers keep your buffet organized and give guests a glimpse of the delicious array of foods available.

Works great with Asia Plus products on pages 50.



Drawer Set *
No. APS 00912
L12¾" W14" H7⅞"
Black
1 pc

Drawer Set
No. APS 00914
L12¾" W14" H7⅞"
Chrome
1 pc.



BUFFET STATION

Organize salad dressing or sugar, milk and cream for coffee service. The three-sided wood box features a wood bar and three metal labels.

Works great with Pastel products on page 60.



Buffet Station
No. APS 84863
L15¾" W6¾" H3¾"
Caramel Acacia
1 pc.



COOLING + HEATING SYSTEMS

Extra touches to make displays thematic and memorable. The possibilities are endless with sign stands, beverage service glass bottles, coolers, canisters, cake stands and glass holding trays.

FRAMES

Food safety is your top priority. Keep cold foods at a safe temperature with subtle wooden frames.

Works great with other Frames products on pages 21, 46, and 63.



Ice box
No. APS 14970
L20 $\frac{7}{8}$ " W12 $\frac{7}{8}$ " H5 $\frac{1}{2}$ "
GN 1/1
Black
1 set, 3 pcs./set

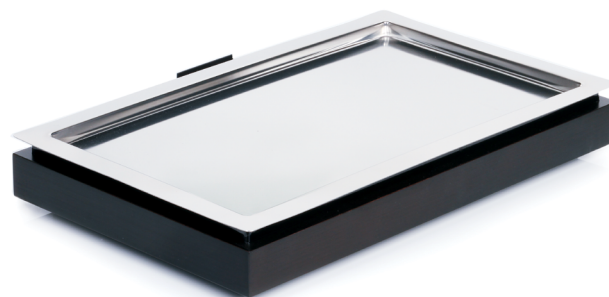
Keep beverages, yogurt and other foods cold with the three-piece set that includes a wood box, deep plastic tray and a draining plate.



WOOD

PS
POLYSTYRENE

PC
POLYCARB.



Cooling box
No. APS 14940
L20 $\frac{7}{8}$ " W12 $\frac{7}{8}$ " H3 $\frac{3}{8}$ "
GN 1/1
Black
1 set, 3 pcs./set

The three-piece set includes a wooden base, GN 1/1 stainless steel platter and a cooler.



WOOD

STAINLESS
STEEL
18/10



Compatible with:
APS 11018 GN 1/1 rolltop cover
APS 11042 GN 1/1 cover
APS 11027 GN 1/1 cover with opening
APS 11028 GN 1/1 cover with opening

BRIDGE

Refrigerated trays and cooling bowls bring new flexibility to presentations where food safety is of the utmost importance.

Works great with other Bridge products on pages 42, 32, and 63.



Cooling bowl with stand
No. APS 14980
L7 $\frac{3}{8}$ " W7 $\frac{3}{8}$ " H4"
17 oz.
Black
1 set, 4 pcs./set

Cooling bowl with stand
No. APS 14981
L10 $\frac{7}{8}$ " W10 $\frac{7}{8}$ " H5 $\frac{5}{8}$ "
84 $\frac{5}{8}$ oz.
Black
1 set, 4 pcs./set



The four-piece set includes a maple wood base, stainless steel bowl, cooler and melamine bowl.



Refrigerated buffet display
No. APS 14990
L25 $\frac{5}{8}$ " W16 $\frac{3}{4}$ " H12 $\frac{1}{4}$ "
Black
1 set, 4 pcs./set

Keep buffet food cold with the refrigerated display. The set includes a maple wooden base, plastic insert, GN 1/1 melamine tray and fixed transparent cover.



SHOWCASE

Make the most of limited space with this selection of stackable covered display trays.



Buffet showcase
No. APS 09104
L17 $\frac{3}{8}$ " W12 $\frac{5}{8}$ " H8 $\frac{1}{8}$ "
Black
1 set, 8 pcs./set

Accessible from both sides of the table, the two-sided buffet display includes an ABS tray, stainless steel tray, two coolers and a transparent rolltop cover.



Two-tier buffet showcase
No. APS 09204
L17 $\frac{3}{8}$ " W12 $\frac{5}{8}$ " H17 $\frac{3}{8}$ "
Black
1 set, 8 pcs./set

Save space while creating a stackable display with the double-decker buffet tray that includes two trays, four coolers and two transparent rolltop covers that are accessible on both sides.



TOP FRESH

The four-piece set includes an acrylic black box, stainless steel GN 1/1 tray and two cooling trays.

Works great with GN 1/1 rolltop cover shown on page 77.



GN 1/1 cooling plate
No. APS 11505
L22 $\frac{7}{8}$ " W14 $\frac{1}{4}$ " H2 $\frac{5}{8}$ "
GN 1/1
Black
1 set, 4pcs./set

CHAFING

Serve hot items confidently with APS Germany chafing dishes and accessories. Available in a variety of configurations, these stainless steel chafing dishes are induction-ready with stainless steel or glass covers and ensure guests will enjoy their food at the right temperature throughout your event.



Round Chafing Dish
No. APS 12330
L15½" W13¾" H6¾"
135¼ oz.
Stainless Steel
1 set, 4 pcs./set



Round Chafing Dish
No. APS 12335
L15½" W13¾" H6¾"
135¼ oz.
Copper
1 set, 4 pcs./set



Round Chafing Dish
No. APS 12338
L15½" W13¾" H6¾"
135¼ oz.
Black
1 set, 4 pcs./set



Rectangle Chafing Dish ●
No. APS 12370
L26" W18½" H13¾"
304¾ oz.
Stainless Steel w/ stainless steel cover
1 set, 5 pcs./set



Rectangle Chafing Dish ●
No. APS 12352
L26" W18½" H13¾"
304¾ oz.
Stainless Steel w/ glass cover
1 set, 5 pcs./set



Round Chafing Dish ●
No. APS 12371
 L21 $\frac{1}{8}$ " W17 $\frac{3}{4}$ " H13 $\frac{3}{8}$ "
 202 $\frac{7}{8}$ oz.
 Stainless Steel w/ stainless steel cover
 1 set, 5 pcs./set



Round Chafing Dish ●
No. APS 12353
 L21 $\frac{1}{8}$ " W17 $\frac{3}{4}$ " H13 $\frac{3}{8}$ "
 202 $\frac{7}{8}$ oz.
 Stainless Steel w/ glass cover
 1 set, 5 pcs./set



Soup Tureen Chafing Dish ●
No. APS 12372
 L18 $\frac{3}{4}$ " W17 $\frac{3}{4}$ " H15 $\frac{3}{4}$ "
 338 oz.
 Stainless Steel w/ stainless steel cover
 1 set, 5 pcs./set



Soup Tureen Chafing Dish ●
No. APS 12354
 L18 $\frac{3}{4}$ " W17 $\frac{3}{4}$ " H15 $\frac{3}{4}$ "
 338 oz.
 Stainless Steel w/ glass cover
 1 set, 5 pcs./set



STANDS

Pair many of these stands with items from the Serve section that are within the same compatibility system (e.g., Plus or GN). Flexibly create dramatic multi-level displays that also maximize your table space.

FRAMES

NEW

The black wooden stand is versatile to hold all GN 1/1 trays and the cutlery / Universal box.

Works great with other Frames products on pages 21, 41, and 63.



GN 1/1 wood serving stand
No. APS 14953
 L22¾" W10¾" H9½"
 Black
 1 pc.



Works great with any GN 1/1 sized products.

WOOD

Get the look you want when you customize your display with warm, welcoming wood in a variety of finishes and shapes.



Wood Stand
No. APS 15310
B4 $\frac{5}{8}$ " T6" H4 $\frac{1}{4}$ "
Maple
1 pc.

Wood Stand
No. APS 15312
B6" T8 $\frac{5}{8}$ " H7 $\frac{5}{8}$ "
Maple
1 pc.



Buffet stand
No. APS 33280
L7 $\frac{7}{8}$ " W7 $\frac{7}{8}$ " H7"
Caramel Acacia
6 pcs.



Window buffet stand
No. APS 11740
H14 $\frac{5}{8}$ " L14" W7 $\frac{1}{2}$ "
Caramel Acacia
1 pc.



Easy-to-install shelves offer new possibilities for multidimensional displays.



Buffet Stand
No. APS 33281
L7 $\frac{7}{8}$ " W7 $\frac{7}{8}$ " H7"
Black
6 pcs.



Vertically or horizontally, there are several display possibilities.

The square buffet stand is made of acacia wood and can be used horizontally or vertically for a variety of display options. The display is available in two tones – caramel acacia and black.



ACACIA

NEW

Versatile buffet stands elevate presentations with a warm, natural oiled acacia wood finish.

Works great with other Acacia products shown on page 9.

All items



33256, 33255



Cake Stand
No. APS 33297
D15½" H6¾"
Acacia Wood
1 pc.



Cake Stand
No. APS 33295
D13" H6¾"
Acacia Wood
1 pc.



Cake Stand
No. APS 33293
D9½" H6¾"
Acacia Wood
1 pc.



Cake Stand
No. APS 33296
D15½" H3¾"
Acacia Wood
1 pc.



Cake Stand
No. APS 33294
D13" H3¾"
Acacia Wood
1 pc.



Cake Stand
No. APS 33292
D9½" H3¾"
Acacia Wood
1 pc.



Buffet Stand
No. APS 15622
D12" H7¾"
Acacia Wood
1 pc.



Buffet Stand
No. APS 15621
D12" H6"
Acacia Wood
1 pc.



Buffet Stand
No. APS 15620
D7¾" H4½"
Acacia Wood
1 pc.



Buffet Stand
No. APS 15623
L20¾" W6¾" H7¾"
Acacia Wood
1 pc.



Three-legged stool buffet stand
No. APS 33256
D9¾" H6"
Caramel Acacia
1 pc.



Three-legged stool buffet stand
No. APS 33255
D6" H4"
Caramel Acacia
1 pc.

The three-legged stool stand offers a modern market feel. Made from caramel acacia wood, the stand is available in two sizes.



Shown: Buffet stand, bowls unavailable



PRISMA

Add an eye-catching element to your display. The star-shaped metal stand is available in two sizes and has a black anti-slide coating.



Star buffet stand
No. APS 33273
D10¼" H7⅞"
Black
6 pcs.



Star buffet stand
No. APS 33272
D10¼" H4¼"
Black
6 pcs.



Works great with serving pieces sized larger than the base.

KING

The two-level metal frame saves space and is easy to assemble for a variety of uses.



Three-pronged metal display stand
No. APS 03623
D6" H8⅞"
Chrome
3 pcs.



Three-pronged metal display stand
No. APS 03622
D6" H5⅞"
Chrome
3 pcs.



Works great with Balance Bowls shown on page 18.



The base serves as a spoon holder.



The arms and base are equipped with non-slip surfaces and stable quality.

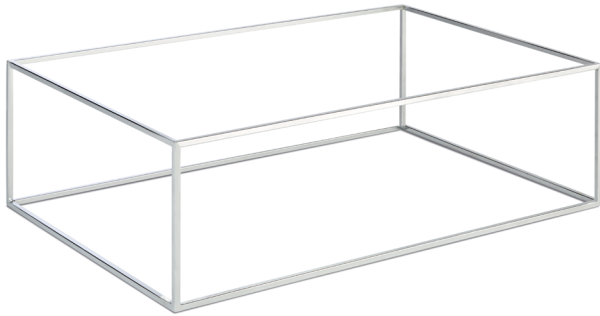
ASIA PLUS

Minimalist pieces add height and texture to your displays without impeding the view of your culinary creations.

Works great with other Asia Plus products shown on pages 17 and 30. Also with the Drawer sets on page 40.

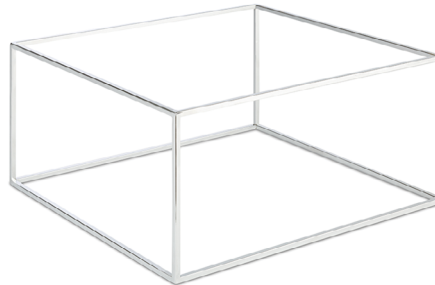


METAL



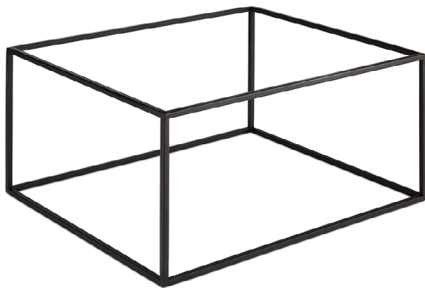
Tiered GN Buffet Stand *
No. APS 15501
L20 $\frac{7}{8}$ " W12 $\frac{7}{8}$ " H6 $\frac{1}{2}$ "
GN 1/1; 2/4
Chrome
1 pc.

Tiered GN Buffet Stand
No. APS 15504
L20 $\frac{7}{8}$ " W12 $\frac{7}{8}$ " H6 $\frac{1}{2}$ "
GN 1/1; 2/4
Black
1 pc.



Tiered GN Buffet Stand *
No. APS 15503
L14" W12 $\frac{7}{8}$ " H7"
GN 1/3; 2/3
Chrome
1 pc.

Tiered GN Buffet Stand
No. APS 15506
L14" W12 $\frac{7}{8}$ " H7"
GN 1/3; 2/3
Black
1 pc.



Tiered GN Buffet Stand
No. APS 15502
L12 $\frac{7}{8}$ " W10 $\frac{1}{2}$ " H6 $\frac{1}{2}$ "
GN 1/2; 1/4
Chrome
1 pc

Tiered GN Buffet Stand *
No. APS 15505
L12 $\frac{7}{8}$ " W10 $\frac{1}{2}$ " H6 $\frac{1}{2}$ "
GN 1/2; 1/4
Black
1 pc.



Works great with matching GN sized products.

Shown: Asia Plus tray, bowl and stand.
*Not all items available in all colors.



STAINLESS
STEEL
18/10



Chopstick buffet stand
No. APS 15513
L8 $\frac{1}{8}$ " W6 $\frac{1}{2}$ " H7 $\frac{7}{8}$ "
Chrome
1 doz.



Chopstick buffet stand
No. APS 15514
L8 $\frac{1}{8}$ " W6 $\frac{1}{2}$ " H7 $\frac{7}{8}$ "
Black
1 doz.



Shown: Asia Plus bowl and stand

Flip over to support additional smaller products. Works great with serving pieces shown on page 17.

BUFFET STAND

NEW

Two-tiered black metal buffet stand is compatible with a variety of APS Germany baskets, trays and boxes for the ultimate in versatility.



Buffet Stand
No. APS 30331
L19" W15" H19"
GN 1/2
Black
1 pc.



Compatible with standard GN 1/2 size superbox trays and/or baskets.

CASUAL

The traditional cake plate offers a simplistic elegance. Made of melamine, the cake plate is available in two styles – circle and square.

The melamine cake stand/tray, available in white or black, has a carved edge to keep a cover from sliding.



Cake plate
No. APS 83891
D12¼" H6¾"
White
1 pc.

Compatible with
APS 06520 Cloche



Cake plate
No. APS 83890
D12¼" H3¼"
White
1 pc.

Compatible with
APS 06512 Cover with knob, large
APS 06520 Cloche



Cake plate
No. APS 83893
L12¼" W12¼" H6¾"
White
1 pc.



Cake plate
No. APS 83892
L12¼" W2¼" H3¼"
White
1 pc.



Cake stand/tray
No. APS 00468
D12¼" H1½"
White
5 pcs.

Compatible with
APS 06520 Cloche



Cake stand/tray
No. APS 00469
D12¼" H1½"
Black
5 pcs.

Compatible with
APS 06520 Cloche



APS 06520

Works great with Cloche cover shown on page 75.

SHELVES

Choices, choices. A variety of shelf options offers new possibilities for displays, with space-saving and height-boosting features.

PERFECTO

NEW

With a strong industrial look, these wood-and-metal shelves are a modern addition to your buffet.



Two-Tier Tray Small
No. APS 33300
L9" W8" H16"
Wood / Black
1 set, 3 pcs./set



Two-Tier Tray Large
No. APS 33301
L31½" W9" H16"
Wood / Black
1 set, 4 pcs./set



Two-Tier Buffet Stand
No. APS 33304
L9" W7½" H16"
Black
1 pc.



Oak Board
No. APS 33302
L7⅞" W7⅞" H¾"
Wood
1 pc.



Oak Board
No. APS 33303
L31½" W7⅞" H¾"
Wood
1 pcs.



Shown: Perfecto, Nero and Snackholder

URBAN

NEW

Modern set includes durable metal rack, two solid wood shelves with notches for included optional labels.

Works great with other Urban products shown on pages 28, 30 and 66.



Two-Tier Tray
No. APS 30339
L14" W8¼" H15¼"
Wood / Black
1 set, 11 pcs./set



Presentation examples



Anti-slip feet



Oiled acacia wood

FRIDA

NEW

Two-tiered black metal and PVC buffet stand is compatible with Frida collection to elevate presentations.



V Tray
No. APS 85230
D10" H2¾"
Wood / Black
1 set, 2 pcs./set



V Tray
No. APS 85231
D13" H2¾"
Wood / black
1 set, 2 pcs./set



Stand
No. APS 33282
D9½" H6¾"
Black
1 pc.



MISCELLANEOUS

These unique shelf displays are the fastest way to add visual interest and draw the eye to your buffet.



The two-tier serving stand includes an acacia wood frame and two slate trays, and is foldable for easy storage.

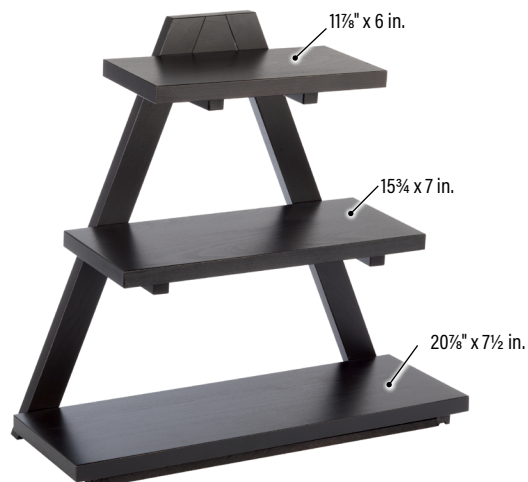


Serving stand, 2-tier

No. APS 00958
L14 $\frac{3}{8}$ " W10 $\frac{1}{2}$ " H13 $\frac{1}{2}$ "
GN 1/3; 1/2
Caramel Acacia
1 set, 3 pcs./set



Works great with any
GN 1/2 and GN 1/3 sized
products.



Triangle buffet stand, 3-tier

No. APS 14966
L20 $\frac{7}{8}$ " W8 $\frac{3}{8}$ " H21 $\frac{3}{4}$ "
Black
1 pc.



Multi rack

No. APS 11444
L8 $\frac{3}{8}$ " W6 $\frac{3}{8}$ " H16 $\frac{1}{4}$ "
Gray
1 set, 4 pcs./set

Ideal for use as a condiment holder, the four-piece multi rack includes a stainless steel frame with a satin polished finish and three frosted plastic bowls.



Shown: Chafing Dish and Serving Fork

FINISH

ADD THE FINAL TOUCHES

From unique visual accents to functional additions that complete a refined experience, APS® Germany provides a breadth of choices that are as useful as they are beautiful.

A taste of the collection

UTENSILS



Angled-handle utensils optimized specifically for convenience.

DRESSING POTS



Melamine, porcelain and stainless steel styles hold large capacities for ease of use.

ORGANIZERS



Finish buffets with coordinating containers to hold linen, flatware, waste and more.

CRUETS / MILLS



For table service or buffet, cruet and shaker carriers come in varied looks to complement your style.

MISCELLANEOUS



Sign stands, beverage service bottles, coolers, canisters, cake stands and glass holding trays.

UTENSILS

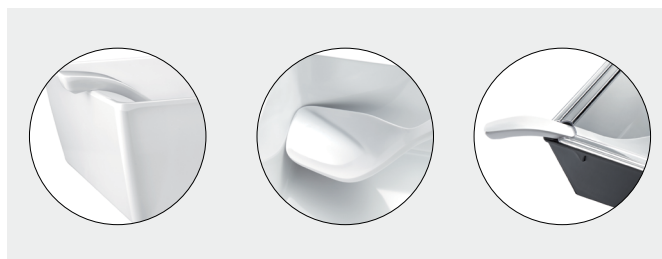
Angled-handle utensils made of high-durability melamine or 18/10 stainless steel. Optimized specifically for convenience, these attractive and sleek designs complement use for any presentation style.

PURE

Works great with notched covers found in both the Asia Plus (page 17) Element (page 19) and Pure (pages 23 and 76) compatibility systems. Unique handle design catches on bowl edge and prevents spoon from sliding into serveware. Unique bowl shape is designed to ease scooping in corners to minimize waste.



Serving spoon
No. APS 84020
 L27 $\frac{1}{8}$ " W2 $\frac{5}{8}$ " H10 $\frac{1}{2}$ "
 White
 8 pcs.



BANQUET

The perfect combination of style and functionality, this stainless steel utensil collection simplifies self-service for an enjoyable buffet experience.

18/10 STAINLESS STEEL UTENSILS



Serving fork
No. APS 00597
L1 $\frac{1}{8}$ " W1 $\frac{1}{4}$ " H12 $\frac{1}{4}$ "
Stainless
1 pc.



Meat fork ●
No. APS 00596
L1" W1" H8 $\frac{5}{8}$ "
Stainless
1 pc.



Ladle
No. APS 00595
L3 $\frac{3}{8}$ " W3" H12 $\frac{1}{4}$ "
Stainless
1 pc.



Dressing spoon
No. APS 00594
L2 $\frac{3}{8}$ " W1 $\frac{5}{8}$ " H13 $\frac{1}{2}$ "
Stainless
1 pc.



Serving spoon
No. APS 00592
L2 $\frac{5}{8}$ " W $\frac{1}{2}$ " H13 $\frac{3}{4}$ "
Stainless
1 pc.



Serving spoon
No. APS 00590
L2 $\frac{3}{8}$ " W1 $\frac{1}{2}$ " H11 $\frac{1}{2}$ "
Stainless
1 pc.



Salad spoon
No. APS 00588
L2" W1" H9 $\frac{9}{16}$ "
Stainless
1 pc.



Salad fork
No. APS 00589
L2" W1" H9 $\frac{9}{16}$ "
Stainless
1 pc.



Serving spoon
No. APS 00593
L2 $\frac{5}{8}$ " W $\frac{1}{2}$ " H13 $\frac{3}{4}$ "
Slotted
Stainless
1 pc.



Cake server
No. APS 00598
L1 $\frac{1}{8}$ " W1 $\frac{1}{4}$ " H12 $\frac{1}{4}$ "
One edge serrated
Stainless
1 pc.



Salad fork
No. APS 00591
L2 $\frac{3}{8}$ " W1 $\frac{1}{2}$ " H11 $\frac{1}{2}$ "
Stainless
1 pc.



Turner
No. APS 00587
L $\frac{7}{8}$ " W4" H12 $\frac{5}{8}$ "
Stainless
1 pc.

DRESSING POTS

Melamine, porcelain and stainless steel styles hold large capacities for ease of use. Designs coordinate with additional family designs, including Superbox, to create a total buffet experience.

PASTEL

The melamine dressing cups are stackable, include non-slip feet and are available in three colors – mint, cream and pink.

Works great with Buffet Station products on page 40.



Dressing pot cup
No. APS 84862
D5½" H7¾"
50¾ oz.
White / Mint
6 pcs.



Dressing pot cup
No. APS 84860
D5½" H7¾"
50¾ oz.
White / Cream
6 pcs.



Features non-slip feet.



Stackable



APS 84863

CASUAL

The sleek-looking melamine dressing pot includes non-slip feet and is available in two colors, white and black.



Dressing pot
No. APS 83868
D4¼" H8½"
33⅞ oz.
Black
6 pcs.



Dressing pot
No. APS 83867
D4¼" H8½"
33⅞ oz.
White
6 pcs.

COVERED DRESSING POT

The traditional-looking covered dressing pots include a stainless steel lid with a notch for spoons. The porcelain pots are available in three sizes.



Covered dressing pot
No. APS 83310
D7" H6"
67¾ oz.
White
8 pcs.

Covered dressing pot
No. APS 83311
D5½" H6½"
27⅞ oz.
White
1 doz.

ORGANIZERS

Finish buffets with coordinating containers to hold linen, flatware, waste and more. Drain hole and silicone floor inserts protect flatware features. Bottoms have non-scratching undersurface.

ELEMENT

Works great with other Element products shown on pages 19, 65, 68, and 69.



Concrete cutlery bin
No. APS 00018
D4 $\frac{3}{8}$ " H5 $\frac{5}{8}$ "
Concrete
1 doz.



The cutlery bin features a utensil design and includes a drain hole and silicone floor inserts to protect flatware.

BASE CHROME

The multi-use bin can be used to hold flatware or table waste. The bins, available in white or black, feature a chrome bottom.



Table waste bin / cutlery bin
No. APS 00019
D5 $\frac{1}{8}$ " H6 $\frac{1}{8}$ "
44 oz.
White
24 pcs.



BRIDGE

The two-piece cutlery organizer includes a wood base and removable plastic insert with four compartments to hold flatware.

Works great with other Bridge products on pages 32, 34, and 42.



Wood cutlery organizer

No. APS 14995

L22¾" W14⅝" H4¾"

Black

1 set, 2 pc./set

FRAMES

The wood box, available in black, has four compartments for flatware.

Works great with other Frames products on pages 21, 41, and 46.



Wood cutlery box

No. APS 14956

L20⅞" W12⅞" H4⅜"

Black

1 pc.

TEA BOX

Elevate your tea service with an elegant display. The wood box features a transparent window and four compartments to hold approximately 30 tea bags.



Tea box

No. APS 11576

L13¼" W7⅞" H3¼"

Maple

For 30 tea bags

8 pcs.

CRUETS + MILLS

For table service or buffet, these cruet and shaker carriers come in varied looks to complement your style.

CLASSIC

All items



40450



Salt and pepper cruet
No. APS 40310
L4¼" W2¾" H6"
Clear / Stainless
36 sets

The stainless steel salt and pepper cruet includes two glass shakers with stainless steel covers.



Four-piece salt and pepper cruet
No. APS 40320
D4¾" H6"
Clear / Stainless
24 sets

The stainless steel salt and pepper cruet includes three glass shakers with stainless steel covers.



Oil and vinegar cruet
No. APS 40440
L6" W3¾" H8½"
Clear / Stainless
18 sets



Spout allows
drip-free pouring

With a stainless steel base, the cruet includes two glass containers with non-drip spouts and stainless steel covers.



Salt, pepper, oil and vinegar cruet
No. APS 40450
L7½" W4¾" H8½"
Clear / Stainless
12 sets



Spout allows
drip-free pouring

With a stainless steel base, the cruet includes glass salt and pepper shakers, two glass containers with non-drip spouts and stainless steel covers.

ELEMENT

Works great with other Element products shown on pages 19, 31, 62, 68, and 69.

All items



40410, 40411, 40412



40411, 40412, 40413

**Concrete salt and pepper cruet****No. APS 40410**L4" W2 $\frac{3}{8}$ " H6 $\frac{3}{4}$ "

Concrete / Clear / Stainless

1 set

The salt and pepper cruet features a concrete base with a furniture-friendly underside and two glass shakers with stainless steel covers.

**Concrete oil and vinegar cruet****No. APS 40411**L5 $\frac{5}{8}$ " W3 $\frac{1}{4}$ " H9 $\frac{7}{8}$ "

Concrete / Clear / Stainless

1 set

The cruet features a concrete base with a furniture-friendly underside and two glass containers with non-drip spouts and stainless steel covers.

**Concrete salt, pepper, oil and vinegar cruet****No. APS 40412**L5" W5" H9 $\frac{7}{8}$ "

Concrete / Clear / Stainless

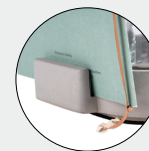
1 set, 6 pcs./set

The combination cruet features a concrete base with a furniture-friendly underside, two glass shakers with stainless steel covers and two glass containers with stainless steel screw caps.

**Concrete salt, pepper, oil and vinegar cruet with card holder****No. APS 40413**L5 $\frac{5}{8}$ " W5 $\frac{3}{8}$ " H7 $\frac{7}{8}$ "

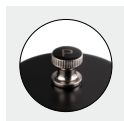
Concrete / Clear / Stainless

1 set, 5pcs./set



With card holder at the back.

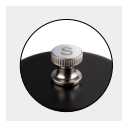
The combination cruet features a concrete base with a furniture-friendly underside, two glass shakers with stainless steel covers and two glass containers with stainless steel screw caps and a card holder.

**Concrete pepper mill****No. APS 40538**D2 $\frac{3}{8}$ " H7 $\frac{1}{8}$ "

Concrete

6 pcs.

Part of the Element pattern, the pepper mill features a concrete base and carbon steel mill. The grinding degree can be adjusted.

**Concrete salt mill****No. APS 40539**D2 $\frac{3}{8}$ " H7 $\frac{1}{8}$ "

Concrete

6 pcs.

Part of the Element pattern, the salt mill features a concrete base and carbon steel mill. The grinding degree can be adjusted.

URBAN

NEW

Works great with other Urban products shown on pages 28, 30, and 54.



WOOD



Salt and Pepper Menage
No. APS 40416
L4¾" W3¾" H9½"
Black
1 set, 3pcs./set

Elegant three-piece set includes acacia wood salt and pepper mills and handled black metal card holder for menus, advertisements and more.



Pepper mill
No. APS 40417
D2" H6¾"
Black
1 pc.

Acacia wood pepper mill with stainless steel grinding mechanism is an elegant addition to any table or buffet setting that makes it easy for guests to season food to their taste.



Salt mill
No. APS 40418
D2" H6¾"
Black
1 pc.

Acacia wood salt mill with stainless steel grinding mechanism is an elegant addition to any table or buffet setting that makes it easy for guests to season food to their taste.

MILLS

Set of elegant turned beechwood salt and pepper mills with ceramic adjustable grinder makes seasoning food enjoyable for guests. Available in two sizes and two finishes.



WOOD



Pepper Mill
No. APS 40570
D2" H6"
Light Brown
1 pc.



Salt Mill
No. APS 40574
D2" H6"
Light Brown
1 pc.



Pepper Mill
No. APS 40572
D2½" H9"
Light Brown
1 pc.



Salt Mill
No. APS 40576
D2½" H9"
Light Brown
1 pc.



Pepper Mill
No. APS 40571
D2" H6"
Dark Brown
1 pc.



Salt Mill
No. APS 40575
D2" H6"
Dark Brown
1 pc.



Pepper Mill
No. APS 40573
D2½" H9"
Dark Brown
1 pc.



Salt Mill
No. APS 40577
D2½" H9"
Dark Brown
1 pc.



Common for all pieces in the collection

PROFESSIONAL VINTAGE

Made of German beechwood, the pepper and salt mills have an aged patina look, carbon steel mill and are available in two sizes and two finishes – worn white glaze and worn green glaze. The grinding degree can be adjusted.

All items



40547, 40536



Pepper Mill
No. APS 40548
D2 3/8" D9 1/8"
Vintage Green
4 pcs.



Pepper Mill
No. APS 40546
D2 1/4" D6"
Vintage Green
4 pcs.



Salt Mill
No. APS 40547
2 1/4" 6"
Vintage Green
4 pcs.



Pepper Mill
No. APS 40537
D2 3/8" D9 1/8"
Vintage White
4 pcs.



Pepper Mill
No. APS 40535
D2 1/4" D6"
Vintage White
4 pcs.



Salt Mill
No. APS 40536
2 1/4" 6"
Vintage White
4 pcs.



GUNMETAL

Create unique presentations for appetizers or desserts, includes two indentations (2 3/8" diameter each) that are perfect for mills, ramekins or small bowls.

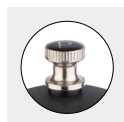
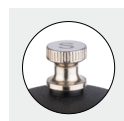
All items



Gunmetal pepper mill
No. APS 40555
D2 3/8" H6 1/8"
Black
6 pcs.



Gunmetal salt mill
No. APS 40556
D2 3/8" H6 1/8"
Black
6 pcs.



Mill in carbon steel, the grinding degree can be adjusted infinitely. Part of the Element pattern, the salt mill features a concrete base and stainless steel mill. The grinding degree can be adjusted.

Salt mill in stainless steel, the grinding degree can be adjusted infinitely.

NATURAL SLATE TRAY

Create unique presentations for appetizers or desserts, includes two indentations (2 3/8" diameter each) that are perfect for mills, ramekins or small bowls.



Natural slate tray
No. APS 00971
L6" W3 1/4" H3/8"
Slate
36 pcs.



MISCELLANEOUS

Extra touches to make displays thematic and memorable. The possibilities are endless with sign stands, beverage service glass bottles, coolers, canisters, cake stands and glass holding trays.

aps

TABLE STANDS



Concrete table stand
No. APS 71494
 L1¼" W1¼" H4¾"
 Concrete
 1 set, 4 pcs./set

The multi-purpose table stands can be used for table numbers or menu descriptions for the buffet. The table stand includes a concrete base and 30 labels.

Works great with other Element products shown on pages 19, 31, 62, 65, and 69.



Metal table stand
No. APS 71512
 D2" H4¼"
 Gunmetal Stainless
 1 set, 4 pcs./set

The four-piece set includes four stainless steel table stands with a mirror polished gunmetal finish and 20 black cards. The table stands are available in three sizes.

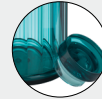
STRIPES

Elevate tabletop water service with elegant bottles in two glass finishes.



Lid provides snug fit.

Clear plastic bottle
No. APS 10748
 D3 $\frac{3}{8}$ " H11 $\frac{1}{4}$ "
 33 $\frac{3}{8}$ oz.
 Clear
 1 doz.



Lid provides snug fit.

Color plastic bottle
No. APS 10749
 D3 $\frac{3}{8}$ " H11 $\frac{1}{4}$ "
 33 $\frac{3}{8}$ oz.
 Aquamarine
 1 doz.

ELEMENT

Keep chilled wine bottles cool in the concrete bottle cooler.

Works great with other Element products shown on pages 19, 31, 62, 65, and 68.



Non-scratching undersurface

Element Black concrete bottle cooler
No. APS 36099
 D4 $\frac{3}{4}$ " H7 $\frac{1}{2}$ "
 Black Concrete
 6 pcs.



Non-scratching undersurface

Element Concrete bottle cooler
No. APS 36090
 D4 $\frac{3}{4}$ " H7 $\frac{1}{2}$ "
 Concrete
 6 pcs.

WOODY

Serve snacks or garnishes for an oatmeal bar in glass canisters. The wood lids have a rope pull and silicone gasket to keep food fresh. Available in three sizes.



GLASS

WOOD

SILICONE



Canister with wood lid
No. APS 82255
D5 $\frac{5}{8}$ " H4 $\frac{3}{8}$ "
33 $\frac{1}{2}$ oz.
Clear / Maple
1 doz.



Canister with wood lid
No. APS 82256
D5 $\frac{5}{8}$ " H6 $\frac{3}{4}$ "
67 $\frac{3}{4}$ oz.
Clear / Maple
6 pcs.



Canister with wood lid
No. APS 82257
D5 $\frac{5}{8}$ " H8 $\frac{1}{2}$ "
84 $\frac{1}{2}$ oz.
Clear / Maple
6 pcs.



Wooden lid with silicone gasket,
not dishwasher safe.

CLASSIC

Keep foods fresh while display-ready in traditional looking glass canisters with aroma-tight glass lids. Available in four sizes.



GLASS

PE
HIGH DENSITY
POLYETHYLENE



Canister with glass lid
No. APS 82550
D4 $\frac{1}{2}$ " H6 $\frac{3}{8}$ "
30 $\frac{1}{2}$ oz.
Clear
1 doz.



Canister with glass lid
No. APS 82251
D5 $\frac{5}{8}$ " H8 $\frac{1}{2}$ "
67 $\frac{3}{4}$ oz.
Clear
6 pcs.



Canister with glass lid
No. APS 82252
D7 $\frac{1}{8}$ " H10 $\frac{1}{4}$ "
135 $\frac{1}{2}$ oz.
Clear
2 pcs.



Canister with glass lid
No. APS 82253
D7 $\frac{1}{8}$ " H11 $\frac{1}{8}$ "
203 oz.
Clear
2 pcs.



Tight seal keeps contents
at their best

NAPKIN HOLDERS

The metal napkin holder is available in two sizes – small to hold 50 napkins and large to hold 150 napkins.



CHROME
PLATED
STEEL



Napkin holder
No. APS 11763
L7½" W7½" H2⅞"
Chrome
For 150 napkins
2 doz.



Napkin holder
No. APS 11765
L7½" W7½" H7½"
Chrome
For 150 napkins
2 doz.



Cocktail napkin holder
No. APS 11762
L6⅜" W5⅝" H2⅝"
Chrome
For 50 napkins
3 doz.



Shown: Cloche, Acacia buffet stand,
Pure round tray

COVER

SHOWCASE AND PRESERVE YOUR CUISINE

Make it easier to keep food fresh, transport it efficiently and enhance its presentation. Our covers are as much about showcasing your cuisine beautifully as they are about preserving it.

A taste of the collection

INTEGRATED



Multi-functional, system-specific covers make it easier for staff to stack and transport cuisine.

ASSORTED



Value with durable lids, keep food fresh, simplify self-serving and enhance presentation.

INTEGRATED

Multi-functional covers make it easier for staff to transport cuisine, including specialized notches for stacking with serving spoons locked in place.



Cover with knob, small
No. APS 15350
 D6½" H4"
 Clear
 1 doz.



Stackable

Transparent with chrome knob
 and heavy, stable quality.



Transparent with
 chrome plated handle.

Cover with knob, large *
No. APS 06512
 D11½" H4½"
 Clear
 1 pc.

Compatible with
APS 15137 ANTI PASTI bowl
APS 83890 CASUAL cake plate

Cover with knob, large
No. APS 06517
 D13" H5"
 Clear
 1 pc.

TRAY COVER

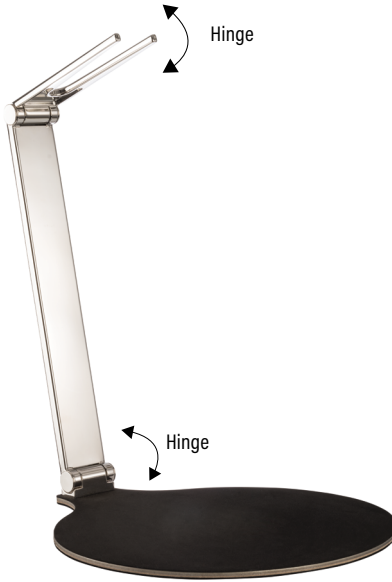
Clear plastic tray locks into the cover to avoid slipping off.



GN 1/1 locking cover
No. APS 11305
 L21½" W13" H3½"
 GN 1/1
 Transparent
 1 pc.



Covers stack to save space and make
 transportation more convenient.



Cover Holder
No. APS 33288
 L11¾" W14" H15¾"
 Black
 1pc.



Compatible with:
APS 15350 Cover with knob, small
APS 06512 Cover with knob, large
APS 06517 Cover with knob, large



Rolltop cover
No. APS 18388
 L9½" W9½" H16"
 Clear
 1 pcs.



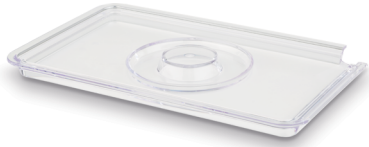
Cloche / cover
No. APS 06520
 D11½" H7½"
 Clear
 1 pc.

This plastic cover has a knob handle for a better grip.

Compatible with
APS 00468 Cake tray
APS 00469 Cake tray
APS 83890 CASUAL cake plate
APS 83891 CASUAL cake plate
APS 83892 CASUAL cake plate
APS 83893 CASUAL cake plate
APS 83884 PURE round tray

UNIVERSAL

Multi-functional covers make it easier for staff to transport cuisine, including specialized notches for stacking with serving spoons locked in place.



Cover with spoon notch
No. APS 15348
L10½" W6½" H½"
GN 1/4
Clear
1 pc.



Cover with spoon notch
No. APS 15342
D9½" H½"
Clear
1 pc.

Compatible with:
APS 00795 ACACIA bowl

PURE



Cover with spoon notch
No. APS 83600
L7¾" W7¾" H½"
Clear
1 pc.

Compatible with:
APS 84830 ELEMENT bowl
APS 83409 PURE bowl
APS 83468 PURE bowl

Cover with spoon notch *
No. APS 83601
L10⅞" W10⅞" H⅝"
Clear
1 pc.

Compatible with:
APS 84831 ELEMENT bowl
APS 83408 PURE bowl
APS 83469 PURE bowl

ASSORTED

Keep food fresh, simplify self-serving and enhance presentation value, includes numerous options with standardized GN size compatibility.

HOCHSTAPLER

Clear plastic tray locks into the cover to avoid slipping off



APS 11300

APS 11305

GN 1/1 locking cover

No. APS 11305

L21 $\frac{1}{8}$ " W13" H3 $\frac{5}{8}$ "

GN 1/1

Transparent

1 pc.

Compatible with:

APS 11300 PROFI stackable tray GN 1/1



Covers stack to save space and make transportation more convenient.

GN 1/1 ROLLTOP COVER



GN 1/1 rolltop cover

No. APS 11018

L20 $\frac{7}{8}$ " W12 $\frac{7}{8}$ " H7 $\frac{1}{2}$ "

GN 1/1

Clear

1 pc.

Compatible with:

APS 14940 FRAMES cooling box
APS 82355 FRAMES tray GN 1/1
APS 40240 GN LINE Basket GN 1/1
APS 11000 PROFI tray GN 1/1



APS 11100 PROFI tray GN 1/1
APS 83401 PURE tray GN 1/1
APS 00388 SCHÖNER ESSEN GN 1/1
APS 84185 ZERO tray GN 1/1

GN COVERS

Fits on any GN-sized tray.



GN 1/2 Cover
No. APS 11041
L12 $\frac{7}{8}$ " W10 $\frac{1}{2}$ " H3 $\frac{3}{4}$ "
GN 1/2
Clear
1 pc.

Compatible with:

APS 15450 ASIA PLUS tray GN 1/2
APS 84671 BLUE OCEAN tray GN 1/2
APS 82356 FRAMES tray GN 1/2
APS 40242 GN LINE Basket GN 1/2
APS 83480 PURE tray GN 1/2
APS 83490 PURE tray GN 1/2
APS 84186 ZERO tray GN 1/2



GN 1/1 Cover
No. APS 11042
L20 $\frac{7}{8}$ " W12 $\frac{7}{8}$ " H3 $\frac{3}{4}$ "
GN 1/1
Clear
1 pc.

Compatible with:

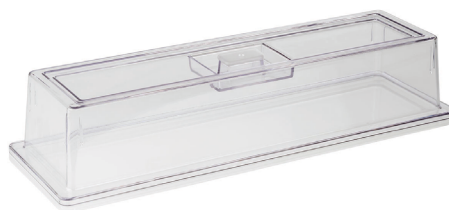
APS 14940 FRAMES cooling box
APS 82355 FRAMES tray GN 1/1
APS 40240 GN LINE Basket GN 1/1
APS 11000 PROFI tray GN 1/1
APS 11100 PROFI tray GN 1/1
APS 83401 PURE tray GN 1/1
APS 00388 SCHÖNER ESSEN tray GN 1/1
APS 84185 ZERO tray GN 1/1



GN 1/3 cover
No. APS 11043
L12 $\frac{7}{8}$ " W7" H4 $\frac{1}{4}$ "
GN 1/3
Clear
1 pc.

Compatible with:

APS 84672 BLUE OCEAN Tray GN 1/3
APS 82357 FRAMES Tray GN 1/3
APS 40244 GN LINE Basket GN 1/3
APS 83481 PURE Tray GN 1/3
APS 83491 PURE Tray GN 1/3



GN 2/4 Cover
No. APS 11044
L20 $\frac{7}{8}$ " W6 $\frac{1}{2}$ " H4 $\frac{1}{4}$ "
GN 2/4
Clear
1 pc.

Compatible with:

APS 84673 BLUE OCEAN tray GN 2/4
APS 83433 PURE tray GN 2/4
APS 83434 PURE tray GN 2/4
APS 84189 ZERO tray GN 2/4



Shown: Pure GN Tray and GN Lid

GN COVER WITH OPENING

Clear with chrome handle and opening for easy self-serving.



GN 1/2 cover with opening

No. APS 11022

L13¼" W10⅞" H6¾"

GN 1/2

Clear

One long side cut out

1 pc.

Compatible with:

APS 15450 ASIA PLUS tray GN 1/2
APS 84671 BLUE OCEAN tray GN 1/2
APS 82356 FRAMES tray GN 1/2
APS 40242 GN LINE Basket GN 1/2
APS 83480 PURE tray GN 1/2
APS 83490 PURE tray GN 1/2
APS 84186 ZERO tray GN 1/2



GN 1/1 cover with opening

No. APS 11027

L21⅞" W13¼" H8⅞"

GN 1/1

Clear

One long side cut out

1 pc.

Compatible with:

APS 14940 FRAMES cooling box
APS 82355 FRAMES tray GN 1/1
APS 40240 GN LINE Basket GN 1/1
APS 11000 PROFI tray GN 1/1
APS 11100 PROFI tray GN 1/1
APS 83401 PURE tray GN 1/1
APS 00388 SCHÖNER ESSEN tray GN 1/1
APS 84185 Zero tray GN 1/1



GN 1/1 cover with opening

No. APS 11028

L21⅞" W13¼" H8⅞"

GN 1/1

Clear

One long side cut out

1 pc.

Compatible with:

APS 14940 FRAMES cooling box
APS 82355 FRAMES tray GN 1/1
APS 40240 GN LINE Basket GN 1/1
APS 11000 PROFI tray GN 1/1
APS 11100 PROFI tray GN 1/1
APS 83401 PURE tray GN 1/1
APS 00388 SCHÖNER ESSEN tray GN 1/1
APS 84185 Zero tray GN 1/1

APS AT-A-GLANCE COMPATIBILITY GUIDE

Here's a quick overview of every product family Libbey offers in our curated collection of APS® Germany products. You can find families that offer interconnecting compatibility with each other, along with matching colors if desired, and then explore the specific SKU details on the listed pages.

FAMILIES	DESCRIPTION
SERVE : SERVEWARE	
ACACIA	Natural oiled acacia wood bowls and trays add warmth to displays in modern, organic shapes.
AKAZIA	This acacia wood slotted cutting board is perfect for fresh bread service with non-slip feet to safely keep it in place while cutting. Crumbs drop through slots to be collected on a bottom shelf.
ANTI PASTI	Smooth bowls with a shallow, decorative, flared edge, ideal for buffets and cold plates.
ASIA PLUS	Most products feature Plus system rings to combine with each other. For example, all bowls and baskets can be used as risers to a wide range of other Plus system products.
BALANCE	A range of bowls in a unique sloping shape feature non-slip feet for added stability. A pronounced ridge around the top supports better grip and consistent stacking.
BLUE OCEAN	Iridescent, gradient aqua blue tones layered on white melamine are reminiscent of a Greek tavern on the Aegean Sea. Rectangular products offer compatibility with standard GN stands and covers.
CANCUN	Blue and brown melamine dinnerware and serveware add a taste of the tropics to presentations indoors and out.
ELEMENT	A trend-forward concrete look introduces bold new display possibilities, without the challenges of using actual concrete. Element offers a range of presentation bowls, trays and accessories that can be beautifully integrated into any buffet landscape.
EMMA	Richly hued melamine serveware goes anywhere you do – ideal for high-traffic and outdoor venues.
FRAMES	A classic rimmed style is elegantly understated, leaving plenty of potential for creating appealing buffet arrangements. It can complement timeless and contemporary styles.
GLOBAL BUFFET	Uniquely styled bowls with distinctive, rippled textured finish lend themselves to versatile buffet presentations.
GN BASKETS	Hand-braided polypropylene features a natural-looking matte finish. This creates an authentic look while adding a higher grade of lasting durability engineered for high-intensity usage and frequent dishwasher cycles. Great for creating a market stand style and highlighting your freshly made goods. Use on their own, with GN compatible stands and covers, or with the Superbox system.
LOOPS	Alternating between matte and shine finishes, Loops melamine dinnerware and serveware features a blue and grey concentric circle design perfect for modern buffet presentations.
MINI	Small, individually sized dishes provide a quick and easy way for guests to serve themselves an artfully plated offering. Uniquely styled porcelain and hammered metal looks add to the appeal.
MUMBAI	Make presentations shine with this collection of stainless steel bowls and handled pans in a hammered mirror finish, available in stainless steel and copper colorways. Ideal for stews, saucy entrees and global cuisine.
NERO	Daring black melamine dinnerware features soft matte finish and ribbed interior texture. Organic shapes and innovative compartments for sauces and dips make this collection a standout.
OLIVE	Made from durable and beautiful natural olive wood that appears to come right from the tree, each piece in this serveware and utensil collection has its own unique features.
PURE	Create a clean aesthetic with simple, monochromatic shapes that have a glossy porcelain look. Bowls are compatible with other Pure system components, which are focused on streamlining operations for staff.
PINEAPPLE	Pineapple-shaped serving dish made of highly durable melamine provides a creative way to showcase your fun and fresh fruit servings.
SERVING BOX	Create bento box-style displays with this customizable collection of wood-look serving boxes and bowls. Sleek, stackable and easy to transport, they are ideal for serving individual portions.
SERVING CAN	Add a modern, industrial look to buffets and table service with these sturdy metal snack cans.



PLUS



SUPERBOX



GN PLATFORM



PURE

	PAGE #	Interconnecting ring system for highstyle buffet building	Versatile boxes build vertically and horizontally with locking corners	Modular and versatile products in industry standard sizing	Ready-to-serve stacking system streamlines staff operations	COLOR / COMPOSITION
	9					
	8					Caramel Acacia / Wood
	16	Bowls (fits covers)		(fits covers)		White / Melamine
	17	Bowls, Trays, Plates (fits covers)	Trays (fits covers)	Trays (fits covers)		White / Melamine Duo Creme + Taupe / Melamine
	18					White / Melamine
	15		Trays (fits covers)	Trays (fits covers)		Blue Enamel + White / Melamine
	12					
	19		Trays	Trays	Bowls (fits covers)	Patterned Concrete, Concrete Look / Melamine
	16					Blue / Melamine
	21		Trays (fits covers)	Trays, (fits covers)		White / Porcelain
	24					White / Melamine
	29					
	13					
	25					Hammered Metal / Melamine White / Melamine
	26					
	14					
	10					
	22		Trays (fits covers)	Bowls, Plates, Trays (fits covers)	Bowls, Plates, Trays (fits covers)	White / Melamine Black / Melamine
	25					
	24				Box (fits covers)	Black / Wood
	26					

APS AT-A-GLANCE COMPATIBILITY GUIDE

Here's a quick overview of every product family Libbey offers in our curated collection of APS® Germany products. You can find families that offer interconnecting compatibility with each other, along with matching colors if desired, and then explore the specific SKU details on the listed pages.

FAMILIES	DESCRIPTION
SERVING POTS	Make presentations shine from oven to table with this collection of brass and aluminum serving pots ideal for stews, saucy entrees and global cuisine.
SNACKHOLDER	Handled metal basket gives french fries and other snacks a fun "straight from the fryer" look. Available in three colorways. This mini handled stainless steel roasting-style pan is perfect for serving appetizers and other single-serving snacks.
SUPERCUP	Is it a cup or a container? Why not both! The Super Cup is a versatile, durable and eco-friendly alternative to single-use plastic cups, ideal for takeout and grab-and-go stations.
SVART	Serve up modern elegance with these versatile black metal baskets featuring a vertical design. Stackable baskets are perfect for bread service, fruit and single-serve items.
URBAN	Heavy duty wire baskets come in a variety of unique shapes and feature metal base for added strength. Compatible with APS Germany covers and coordinates with any buffet display.
ZERO	Build your presentation with GN trays. Available in two colors, the trays fit on top of the Superboxes (pages 38-39).
SERVE : DISPENSERS	
DISPENSERS	All dispensers are meticulously engineered to keep drink and food fresh while also being extremely easy to set up and clean.
SERVE : TRAYS	
TRAYS	A range of additional stylish trays, many with a high-sheen or satin stainless steel finishes, offer a breadth of serving possibilities. Many options that are ideal for either buffet presentations or for individual servings.
BUILD FAMILIES : Take displays to the next level with stands, stacking and cooling systems	
COOLING & HEATING SYSTEMS	These systems feature integrated cooling packs or insulated containers that help maintain cuisine and beverage freshness. Rolltop units help further seal in the cool. Perfectly coordinated components support an uncomplicated and organized buffet system.
SUPERBOX	These stackable and non-slip boxes can be connected to flat GN trays or used individually. Flip them over to use as a flat surface or as a basket. They also connect horizontally with "bridge" pieces to create anything from elaborate installations to a simple display.
STANDS	Flexibly create dramatic multi-level displays that also maximize your table space with multiple looks and styles. Pair many of these stands with items from the "Serve" section that are within the same compatibility system.
SHELVES	Choices, choices. A variety of shelf options offers new possibilities for displays, with space-saving and height-boosting features.
FINISH FAMILIES : Add the final touches with small essentials	
CRUETS / MILLS	For table service or buffet, these cruet and shaker carriers come in varied looks to complement your style.
DRESSING POTS	Melamine, porcelain and stainless steel styles hold large capacities for ease of use. Designs coordinate with additional family designs, including Superbox, to create a total buffet experience.
MISCELLANEOUS	Extra touches to make displays thematic and memorable. The possibilities are endless with sign stands, beverage service glass bottles, coolers, canisters, cake stands and glass holding trays.
ORGANIZERS	Finish buffets with coordinating containers to hold linen, flatware, waste and more. Drain hole and silicone floor inserts protect flatware features. Bottoms are non-scratching.
UTENSILS	Angled-handle utensils made of high-durability melamine or 18/10 stainless. Optimized specifically for convenience; the attractive, sleek design complements use for any buffet style.



PLUS



SUPERBOX



GN PLATFORM



PURE

	PAGE #	Interconnecting ring system for highstyle buffet building	Versatile boxes build vertically and horizontally with locking corners	Modular and versatile products in industry standard sizing	Ready-to-serve stacking system streamlines staff operations	COLOR / COMPOSITION
	25					Black / Metal
	27					
	24					
	29					Black / Metal
	28					Black / Metal
	20					Black / White
	30					Glass, Clear Acrylic, Wood, Stainless, Concrete
	35		Trays (fits covers)	Trays (fits covers)		Chrome / Metal
	41			Trays, Boxes (fits covers)		Black / Wood
	38		Boxes, Trays, Stations, Inserts, Stands, (fits covers)	Trays (fits covers)		Caramel Acacia / Wood Black / Wood
	46	Baskets, Stands (fits covers)		Frames, Stands (fits covers)	Stands (fits covers)	Assorted / Melamine/ Metal, Wood
	53					Assorted / Melamine/ Metal / Wood
	64					Assorted / Acrylic, Wood, Metal, Concrete
	60		Dressing Pots			Assorted / Melamine White / Porcelain / Chrome / Metal
	68					Assorted / Glasses, Wood, Metal, Concrete
	62					Assorted / Acrylic, Wood, Metal, Concrete
	58				Profi Spoons	White / Melamine/ Chrome/ Metal

PRODUCT MATERIALS / CARE AND USE

Please review all details and care instructions relevant to your selected APS product to keep it in great condition.

ACRYLIC	<p>Acrylic – synthetic resin: Colorless, glass-like clarity, will not splinter. Chemical modified similar to Plexiglas®.</p> <p>Care and use: Only clean with commercially available acrylic cleaners or mild / non-alcoholic cleaner that is ammonia-free. Not dishwasher safe. Service temperature of -40°F to 58°F.</p>	PC POLYCARB.	<p>Polycarbonate: Robust and rigid material is nearly unbreakable. Dimensionally stable even in boiling water. Service temperature up to -22°F to 212°F.</p> <p>Care and use: Dishwasher and microwave safe.</p>
ABS ACRYLONITRILE-BUTADIENE-STYRENE	<p>Acrylonitrile-butadiene-styrene copolymers: Extremely hard and durable. Resistant to changes in temperatures and dishwasher safe. Service temperature up to 248°F.</p>	PP POLYPROP.	<p>Polypropylene: Tough elastic, virtually unbreakable. Environmentally friendly and recyclable. Service temperature of -22°F to 176°F.</p> <p>Care and use: Dishwasher and microwave safe.</p>
CAST IRON	<p>Cast iron: Durable, heavy material suitable for all types of stoves (including induction). Cast iron retains heat for an extended period and transfers it evenly, significantly reducing the chance of overheating. Undamaged surfaces are completely hygienic. Not shock-resistant. Magnetic.</p> <p>Care and use: Clean with hot water immediately after use. If stained, clean with vinegar. Never use steel wool, and only use mild cleaners. Store dry.</p>	PS POLYSTYRENE	<p>Polystyrene: Rigid, scratch-proof. Dimensionally stable in boiling water. Service temperature up to 167°F.</p> <p>Care and use: Not dishwasher safe.</p>
CHROME PLATED STEEL	<p>Chrome plated steel: Non-noble metal with a hard chromium coating. Not acid-resistant. No protection against environmental influences after damage to the chromium coating.</p> <p>Care and use: Never use scouring cleaners, always use a soft cloth.</p>	SILICONE	<p>Silicone: High thermal resistance. Remains flexible in low temperatures. Service temperature of -158°F to 356°F.</p> <p>Care and use: Dishwasher safe.</p>
CONCRETE	<p>Concrete: Raw concrete material. Handmade.</p> <p>Care and use: Not dishwasher safe.</p>	SLATE	<p>Slate: Sealed and food-safe.</p> <p>Care and use: Not dishwasher safe.</p>
PORCELAIN	<p>Porcelain: Dishwasher safe. Heat-resistant up to 392°F.</p>	STAINLESS STEEL	<p>Stainless steel (unspecific): Low nickel content stainless steel similar to 14/4. Not magnetic. Lower general resistance compared to stainless steel 18/10.</p> <p>Care and use: See stainless steel 18/10 instructions.</p>
MF MELAMINE	<p>Melamine: Very tough, scratch- and shock-proof. Hygienic. Acid-resistant. Service temperature of -22°F to 158°F.</p>	STAINLESS STEEL 18/0	<p>Stainless steel 18/0: Durable material will not rust with proper care. Completely hygienic and non-toxic. High degree of hardness makes it ideal steel for table knives, trays or cutting tools. Can be polished. Suitable for use by those with a nickel allergy. Magnetic. Not as chemical resistant as stainless steel 18/10. Service temperature up to 752°F.</p> <p>Care and use: Machine washable or by hand with mild detergents. It's essential to remove deposits of limescale, and cleaner residue has to be removed directly after washing. Never clean with steel wool.</p>
MS PLASTIC	<p>MS – plastic: Colorless, transparent glass-like clarity. Service temperature of 32°F to 158°F.</p> <p>Care and use: Not dishwasher safe.</p>	STAINLESS STEEL 18/8	<p>Stainless steel 18/8 and 18/10: Durable material will not rust. Completely hygienic, non-toxic and recyclable.</p> <p>Care and Use: Not resistant to extended contact with chloride and acids (e.g., table salt or fruit acid). For sterilizing, surface can be polished. Not magnetic. Service temperature up to 752°F. Can be cleaned mechanically or by hand with mild cleaners. Try to avoid using steel wool. Avoid thermal shock from rapid cooling after heating.</p>
PE HIGH DENSITY POLYETHYLENE	<p>PE – polyethylene / HDPE – high density polyethylene: Tough elastic material, virtually unbreakable. Retains sufficient dimensional stability in boiling water. High sheen. Service temperature of -40°F to 248°F.</p> <p>Care and use: Dishwasher safe.</p>	STAINLESS STEEL 18/10	

PRODUCT COMPATIBILITY



PLUS – Trend-forward, high-style buffet system with interconnecting rings for building with round and square pieces.



Superbox – Versatile, multipurpose boxes build vertically or horizontally with locking corner notches, creating an integrated, unified appearance; containers flip, stack and connect.



GN Platform – Modular products in industry-standard sizes provide extensive versatility with other APS products, as well as with your existing collections.



PURE – To create unlimited combinations, product focuses on streamlining staff operation.



Independent – Freestanding units that are not part of any system. They work beautifully on their own or as a complement to a more sophisticated display.

GN Sizing

Many APS® Germany products come in standard European GN (gastronorm) sizes, which are of comparable dimensions and usually interchangeable with U.S. food / table pan sizes of the corresponding fraction. This lets you use them with your existing collections. For example, a 1/2 GN roughly corresponds to a 1/2 U.S. food pan. See the chart below for the range of GN sizes offered by APS.

GN 1/1	GN 1/2		GN 2/4	GN 1/3
	GN 1/4	GN 1/4		GN 1/3
				GN 1/3

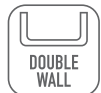
ICONS



Dishwasher safe



Not dishwasher safe



Double wall



For cooling



Stackable



Microwave safe



Non-slip feet



Self assembly required



Shatterproof

DEMONSTRATION VIDEOS



Cleaning Dispenser Spigot

Spigots are designed to be extremely easy to disassemble and clean. For a demonstration video, scan the QR code with your smartphone.

DINNERWARE SETTING REQUIREMENTS

To determine the quantity of each item, multiply the number of seats times the ordering factor shown for each item.
Example: A 6" plate for a 150 seat formal dining venue is 2 x 150 = 300 pieces.

ITEM * INFORMAL	FORMAL	SEMI-FORMAL	
6" Plate	2	3	-
7" Plate	2	2	2
8" Plate	2	2	-
9" Plate	3	3	3
10" Plate	2	-	-
11" Plate	3	-	-
12" Plate	2	-	-
9" Platter	1½	1½	3
10" Platter	1½	1½	-
11" Platter	1½	1½	3
12" Platter	1½	1½	-
13" Platter	1½	1½	-
Coffee/Tea Cup	3	2	-
Coffee/Tea Saucer	3	2	-
Bouillon	1½	1½	3
Mug	2	3	3
Fruit Bowl	3	6	3
Grapefruit Bowl	1	1	2
Rimmed Soup Bowl	½	-	-
Coffee/Tea Pot	½	-	-
Creamer	-	½	½
1			

Note: *Range of size. For example, 6" means 6" to 6¾" range.

WARRANTY + TERMS OF SALE

This limited warranty is good only if the items have chipped under normal usage. Libbey reserves the right to determine normal usage. The warranty does not cover breakage.

Claims must be submitted in writing to:

Schönwald; Libbey LLC
Dinnerware QA
300 Madison Ave.
Toledo, OH 43604

Claims must be accompanied by the item(s) and a copy of the authorized Libbey distributor's invoice. A written response or replacement authorization will be sent to the claimant. Return freight is the responsibility of the customer. Replacements are shipped freight prepaid.

Partial Terms of Sales

- 1. Minimum Orders:** Minimum orders accepted are \$200 net to a single destination. Orders less than \$200 net will not be processed.
 - 2. Returns:** No merchandise may be returned without written authorization from Libbey. Any such merchandise must be sent back freight pre-paid by the customer in original cartons and is subject to a 15%-25% restocking charge.
- Only stock items may be returned.**








APS COMPOSITION / COLOR

Create a coordinated look by combining colors and materials. Product listings note color availability, as does the at-a-glance overview on page 80. Duo-toned products are noted with both colors, interior color / exterior color.

Melamine:

	White		Patterned Concrete
	Black		Dark Patterned Concrete
	Birch Look		Concrete Look
	Oak Look		Black Hammered
	Gloss White / Matte White		Gray Hammered
	Cream / Taupe		White / Pink
	Blue Enamel / White		White / Cream
	Iron		White / Mint
	Blue		











Metal:

	Chrome		Stainless
	Gold		Satin Stainless
	Copper		Gunmetal Stainless
	Black		

Wood:

	Black		Maple
	Espresso		Vintage White
	Caramel Acacia		Vintage Green

Miscellaneous:

	Clear (Glass and Acrylics)		Warm Wicker (Polypropylene)
	Transparent (Acrylics)		Gray Marble
	White (Porcelain)		Slate (Natural Slate)
	Concrete		Frosted (Acrylics)
	Black Concrete		Aquamarine (Acrylic)

DIMENSIONS DISCLAIMER

The nature of the chinaware manufacturing process may cause normal size and color variations to occur. Accepted trade practices recognize an allowable over/under variance in size of 1/8 inch in diameter and +/- 10% in capacity from the published catalog information.

DIMENSIONS/CAPACITIES

(listed under each item)

"H"= height

"T"= top diameter

"B"= bottom diameter

"D"= maximum diameter

"F"= foot diameter

"WL"= well diameter

H-T-B dimensions are listed to the nearest 1/8 inch.

Listed dimensions should not be construed as specifications.

Exact specifications are available from:

Libbey LLC
P.O. Box 10060
300 Madison Ave.
Toledo, OH 43699-0060

NUMERICAL INDEX

APS	APS 03622 18, 49	APS 11721 39	APS 15506 40, 50
APS 00018 62	APS 03623 18, 49	APS 11722 39	APS 15513 50
APS 00019 62	APS 06512 74	APS 11723 39	APS 15514 50
APS 00388 35	APS 06517 74	APS 11724 38, 39	APS 15620 48
APS 00468 52	APS 06520 52, 75	APS 11740 47	APS 15621 48
APS 00469 52	APS 09104 43	APS 11762 71	APS 15622 48
APS 00587 59	APS 09204 43	APS 11763 71	APS 15623 48
APS 00588 59	APS 10400 31	APS 11765 71	APS 18388 75
APS 00589 59	APS 10403 30	APS 11973 34	APS 30331 51
APS 00590 59	APS 10451 30	APS 12330 44	APS 30337 28
APS 00591 59	APS 10506 24	APS 12335 44	APS 30339 54
APS 00592 59	APS 10700 32	APS 12338 44	APS 30410 28
APS 00593 59	APS 10748 69	APS 12352 44	APS 30411 28
APS 00594 59	APS 10749 69	APS 12353 45	APS 30412 28
APS 00595 59	APS 10750 32	APS 12354 45	APS 30413 28
APS 00596 59	APS 10764 34	APS 12370 44	APS 30414 28
APS 00597 59	APS 10778 34	APS 12371 45	APS 30415 28
APS 00598 59	APS 10792 34	APS 12372 45	APS 30416 28
APS 00620 33	APS 10800 32	APS 14940 41	APS 30420 29
APS 00621 33	APS 10802 33	APS 14953 46	APS 30421 29
APS 00790 9	APS 10851 31	APS 14956 46, 63	APS 30422 29
APS 00791 9	APS 10853 31	APS 14966 55	APS 30423 29
APS 00792 9	APS 10855 31	APS 14970 41	APS 30424 29
APS 00793 9	APS 10872 32	APS 14980 42	APS 33255 48
APS 00794 9	APS 10873 32	APS 14981 42	APS 33256 48
APS 00795 9	APS 11000 35	APS 14987 34	APS 33272 49
APS 00796 9	APS 11018 77	APS 14990 42	APS 33273 49
APS 00843 10	APS 11022 79	APS 14995 63	APS 33280 47
APS 00844 10	APS 11027 79	APS 15135 16	APS 33281 47
APS 00870 11	APS 11028 79	APS 15137 16	APS 33282 54
APS 00871 11	APS 11041 78	APS 15310 47	APS 33288 75
APS 00873 11	APS 11042 78	APS 15312 47	APS 33292 48
APS 00874 11	APS 11043 78	APS 15342 76	APS 33293 48
APS 00875 11	APS 11044 78	APS 15348 76	APS 33294 48
APS 00876 11	APS 11100 35	APS 15350 74	APS 33295 48
APS 00877 11	APS 11300 35, 77	APS 15400 17	APS 33296 48
APS 00884 8	APS 11305 74, 77	APS 15401 17	APS 33297 48
APS 00905 11	APS 11444 55	APS 15402 17	APS 33300 53
APS 00906 11	APS 11505 43	APS 15403 17	APS 33301 53
APS 00907 10	APS 11576 63	APS 15404 17	APS 33302 53
APS 00908 10	APS 11616 39	APS 15424 17	APS 33303 53
APS 00911 8, 40	APS 11617 39	APS 15425 17	APS 33304 53
APS 00912 40	APS 11620 38	APS 15428 17	APS 36090 69
APS 00914 40	APS 11621 38	APS 15450 17, 40	APS 36099 69
APS 00958 55	APS 11622 38	APS 15452 17	APS 40186 26
APS 00971 67	APS 11623 38	APS 15501 50	APS 40187 26
APS 01010 10	APS 11626 38	APS 15502 50	APS 40188 26
APS 01011 10	APS 11627 31, 38, 39	APS 15503 40, 50	APS 40240 29
APS 01012 10	APS 11628 38	APS 15504 50	APS 40242 29
APS 01023 10	APS 11629 38	APS 15505 50	APS 40244 29

These rulers can be helpful in checking glass dimensions for glassware verification, storage tray requirements, etc.

APS 40246	29	APS 40660	27	APS 83787.....	24	APS 84862	40, 60
APS 40310.....	64	APS 40730	26	APS 83867.....	40, 61	APS 84863	40, 60
APS 40320	64	APS 40731.....	26	APS 83868	61	APS 85021.....	13
APS 40410.....	65	APS 40732.....	26	APS 83884	23	APS 85024	13
APS 40411	65	APS 40733.....	26	APS 83890	52	APS 85025	13
APS 40412.....	65	APS 40734.....	26	APS 83891.....	52	APS 85026	13
APS 40413.....	65	APS 40735.....	26	APS 83892	52	APS 85027.....	13
APS 40416.....	66	APS 40736.....	26	APS 83893	52	APS 85028	13
APS 40417.....	66	APS 40737.....	26	APS 84020	58	APS 85029	13
APS 40418.....	66	APS 40738.....	26	APS 84040	18	APS 85030	13
APS 40440	64	APS 40740.....	25	APS 84041.....	18	APS 85036	13
APS 40450	64	APS 40741.....	25	APS 84042	18	APS 85037.....	13
APS 40535	67	APS 40742.....	25	APS 84043	18	APS 85038	13
APS 40536	67	APS 71494	68	APS 84185.....	20	APS 85055	13
APS 40537.....	67	APS 71512.....	68	APS 84186.....	20	APS 85056	13
APS 40538	65	APS 82251.....	70	APS 84188.....	20	APS 85057.....	13
APS 40539	65	APS 82252.....	70	APS 84189.....	20	APS 85060	14
APS 40546	67	APS 82253	70	APS 84400	19	APS 85061.....	14
APS 40547.....	67	APS 82255	70	APS 84401.....	19	APS 85062	14
APS 40548	67	APS 82256	70	APS 84402	19	APS 85063	14
APS 40555	67	APS 82257.....	70	APS 84403	19	APS 85064	14
APS 40556	67	APS 82355	21	APS 84404	19	APS 85065	14
APS 40570	66	APS 82356	21	APS 84424	23	APS 85066	14
APS 40571.....	66	APS 82357.....	21	APS 84425	23	APS 85067	14
APS 40572.....	66	APS 82550	70	APS 84426	23	APS 85068	14
APS 40573.....	66	APS 83310.....	61	APS 84427.....	23	APS 85069	14
APS 40574.....	66	APS 83311	40, 61	APS 84450	25	APS 85070	14
APS 40575.....	66	APS 83401.....	22	APS 84452	25	APS 85071.....	14
APS 40576.....	66	APS 83403	23	APS 84454	25	APS 85072.....	14
APS 40577.....	66	APS 83406	22	APS 84456	25	APS 85073.....	14
APS 40600	27	APS 83407.....	22	APS 84458	25	APS 85074.....	14
APS 40601.....	27	APS 83408	23	APS 84624	25	APS 85075.....	14
APS 40602	27	APS 83409	23	APS 84671.....	15	APS 85088	24
APS 40603	27	APS 83410.....	23	APS 84672.....	15	APS 85097.....	14
APS 40610.....	27	APS 83414.....	23	APS 84673.....	15	APS 85098	14
APS 40611	27	APS 83417.....	23	APS 84674.....	15	APS 85101	16
APS 40612.....	27	APS 83418.....	22	APS 84675	15	APS 85105.....	16
APS 40613.....	27	APS 83433	22	APS 84676	15	APS 85109.....	16
APS 40620	27	APS 83434	22	APS 84677.....	15	APS 85121	16
APS 40621.....	27	APS 83466	23	APS 84678	15	APS 85125.....	16
APS 40622	27	APS 83467.....	23	APS 84778.....	25	APS 85129.....	16
APS 40623	27	APS 83468	23	APS 84779.....	25	APS 85133.....	16
APS 40624	27	APS 83469	23	APS 84781.....	25	APS 85200	12
APS 40625	27	APS 83480	22	APS 84782.....	25	APS 85201.....	12
APS 40626	27	APS 83481.....	22	APS 84824	19	APS 85202	12
APS 40627.....	27	APS 83482	22	APS 84828	19	APS 85203	12
APS 40628	27	APS 83484	23	APS 84829	19	APS 85204	12
APS 40629	27	APS 83490	22	APS 84830	19	APS 85205	12
APS 40655	26	APS 83491.....	22	APS 84831.....	19	APS 85206	12
APS 40656	26	APS 83492	22	APS 84835	19	APS 85208	12
APS 40657	26	APS 83597.....	23	APS 84836	19	APS 85230	54
APS 40658	26	APS 83600	76	APS 84837.....	19	APS 85231.....	54
APS 40659	26	APS 83601.....	19, 76	APS 84860	40, 60		

CENTIMETERS



The products here

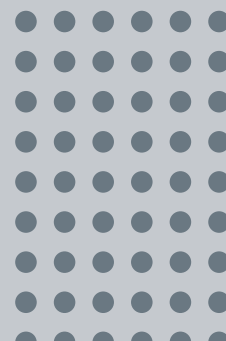
are just the beginning

From selection to service, Libbey is your partner for the complete tabletop. Connect with a sales representative near you to schedule a one-on-one consultation at your business or in one of our showrooms. We'll discuss your vision for your space, design the perfect tabletop and make your culinary dreams a reality.

Explore our full selection of literature to find inspiration and spark your imagination

- Full Tabletop Catalog
- Reserve by Libbey®
- Senior Living & Healthcare
- Hospitality
- And more

LIBBEYFOODSERVICE.COM





Shown: Stacking Stemless, Newton Cooler, Newton DOF, Porcelana Pellet, Porcelana Nestabowl, Element Drink Dispenser with Concrete Stand, Element Look Bowl, Element Three-legged Stool Buffet Stand, Trays Oblong Tray



EXPLORE THE COMPLETE LIBBEY TABLEWARE COLLECTION

A diverse family of Libbey brands provide versatile options designed to enliven any dining experience. Discover the possibilities at libbeyfoodservice.com



Printed on paper containing post-consumer waste. Please recycle this brochure

L-7200. Printed in the USA

©2024 Libbey LLC. Updated 10/2024



European brands crafted to exceed the expectations of discerning diners and foodservice professionals.



Setting the standard in glass tableware expertise and innovation since 1818, including its newest premium collection, Reserve® by Libbey.



Innovative, beautiful buffet and serveware selection, brilliantly designed around the way you work.¹

¹Libbey® Foodservice is the exclusive distributor of APS® Germany buffet and serveware to the foodservice industry in the United States and its territories and in Canada.